

# ORIGINAL INSTRUCTION MANUAL

## For INDUSTRIAL VACUUM CLEANER (Retain for future reference)



## AIR VAC 30/45 - TYPE H - ATEX

For **Dry Collection** ONLY

FOR NON FLAMMABLE AND NON CORROSIVE LIQUIDS OR DUSTS AND DEBRIS  
COMPRESSED AIR POWERED

Serial No.....

(To be completed by user)

READ THIS INSTRUCTION MANUAL

**BEFORE USING THE APPLIANCE**

Part Number	Model Description
55 64186 00	AV30H AIR VAC - TYPE H - ATEX G1D21
55 64712 00	AV45H AIR VAC - TYPE H - ATEX G1D21

The above Model carries this ATEX Certification Code



We reserve the right to change the design without notice

## IMPORTANT USER INFORMATION

It is most important that this instruction book should be retained with this appliance for future reference. Should this appliance be sold or transferred to another user, always ensure that this book is supplied with this appliance in order that the user can be acquainted with the functioning of this appliance and the relevant warnings. These warnings are provided in the interest of safety. You must read them carefully before using this appliance.



It is dangerous to alter the specification or modify this appliance in any way.

This appliance is a Type H Dry Pick-Up Compressed Air Vacuum Cleaner and is designed for use in five different environments:

1. To pick up non-explosive dust and debris in an un-zoned atmosphere.
2. To pick up non-explosive dust and debris in a Gas Zone 1 atmosphere (A Gas Zone 1 atmosphere is where flammable gases, vapours and mists are likely to occur).
3. To pick up dust and debris that may explode if ignited (Dust Zone 21) in an area where no flammable gases, vapours or mists are present. (A Dust Zone 21 atmosphere is where a potentially explosive dust cloud is likely to occur).
4. To pick up dust and debris that may explode if ignited (Dust Zone 21) in a Gas Zone 1 atmosphere.
5. To pick up Non Flammable and Non Corrosive Liquids where a Gas Zone 1 and/or Dust Zone 21 atmosphere may or may not be present.

Before using this appliance, or any of the optional extras, a risk assessment must be carried out by a competent person to ensure that this appliance is suitable for the application. The risk assessment is the responsibility of the customer/end user. The manufacturer and/or his agent are not qualified to make the risk assessment on behalf of the end user.

## WARNING / CAUTION

**DO NOT** remove this Type H vacuum cleaner from contaminated area unless it has been decontaminated in accordance with the “Decontamination” section later in this manual.

This appliance is not suitable for collecting radioactive dust.

This vacuum cleaner is not suitable for picking up dust with an ignition energy of less than 1mJ.

This appliance is designed for dry use only and should be used with care outdoors. It should not be stored outdoors.

The air supply hose has a special conductive lining to dissipate any static build up down to earth. The end piece you fit must be metal and your air supply pipe system must be earthed.

The air supply hose should be kept away from heat, oil, sharp edges and rough surfaces. If there is a risk of the air supply hose being severed an air fuse should be fitted, a suitable air fuse is available from BVC.

If the air supply hose is damaged and needs replacing, it **MUST** be replaced by a conductive supply hose available from BVC. Do not use any other air supply hose.

It is strongly advised that the earth path continuity between the pick-up tool and the earthed air supply system be checked by a competent person at regular intervals and records be kept of these checks.

Air Compressors used to supply this vacuum cleaner must incorporate a filter on the intake system to avoid ingress of dust or foreign material and must employ only lubricants which are resistant to ignition or carbonisation within the equipment's operating temperature range.

This appliance is not to be used with pyrophoric or self-reactive dusts.

This vacuum cleaner must not be used to pick up glowing dust/particles or other ignition hazards.

When picking up swarf and similar metallic parts, the AV must not be used to pick up potentially explosive dusts or be used in potentially explosive atmospheres.

## WARNING / CAUTION CONTINUED...

**Note:** When rusty steel and aluminium items collide with sufficient energy it is possible to generate a spark.

Use only the hose and accessories supplied with this vacuum cleaner. These have been ATEX assessed as suitable for use with this appliance. A wider range of ATEX approved nozzles is available from BVC. **NEVER** use any other hose or accessories.

Use only BVC approved accessories and spare parts.

Ensure that the product being collected is suitable for vacuum cleaning.  
When collecting dust or debris that may ignite or explode, empty the cleaner after every use.

This appliance must be disconnected from the air supply before any maintenance is carried out.

Do not use the appliance with the filters and/or Microfibre bag removed.

**NEVER use this appliance without the full filtration system fitted.**

Under no circumstances should you attempt to repair the appliance yourself. Repairs undertaken by unauthorised or inexperienced persons may cause injury and/or serious malfunctioning.

This appliance must only be serviced by authorised BVC personnel and only genuine BVC spare parts should be used.

**NOISE EMISSION 73.15 dB(A) @ 3m – AV30H AIR VAC – TYPE H**

**NOISE EMISSION 72.15 dB(A) @ 3m – AV45H AIR VAC – TYPE H**

## PREPARATION FOR USE

Unpack and identify each item of equipment against packing note.  
Check the rating plate against the ATEX zone, in which the machine and any accessories are to be used.

## UNPACKING YOUR VACUUM CLEANER

Unpack the carton and ensure that you have a complete set of accessories as listed below:

Item	Part Number	Quantity	Description
1		1 off	Compressed Air Powered Vacuum Cleaner
2	29 30000 70	1 off	Air Supply Hose, Anti-Static, 5 metres long
3	29 03801 00	1 off	Hose Standard Duty 3.0m PVC Anti-Static
4	29 03802 00	1 off	ATEX Bend 30 Degree Stainless Steel
5	29 03803 00	2 off	ATEX Extension Arm 470mm Stainless Steel
6	29 03808 10	1 off	ATEX 38 Crevice Tool Anti-Static 300mm
7	29 03807 10	1 off	ATEX 38 x 70mm Dusting Brush Anti-Static
8	29 03806 10	1 off	ATEX 38 x 100mm Dusting Brush Anti-Static
9	29 03817 00	1 off	ATEX 38 x 375mm Heavy Duty Floor Tool with Brushes Anti-Static
10	29 30014 00	1 off	Dry Filter Assembly Anti-Static
11	29 30024 20	5 off	K4 Microfibre Bags
12		1 off	Yellow Earth Path Continuity Certificate

Models on a caddy (AV 30H & 45H) are packed with the caddy handle removed for transport/packing purposes. Refit handle before use.

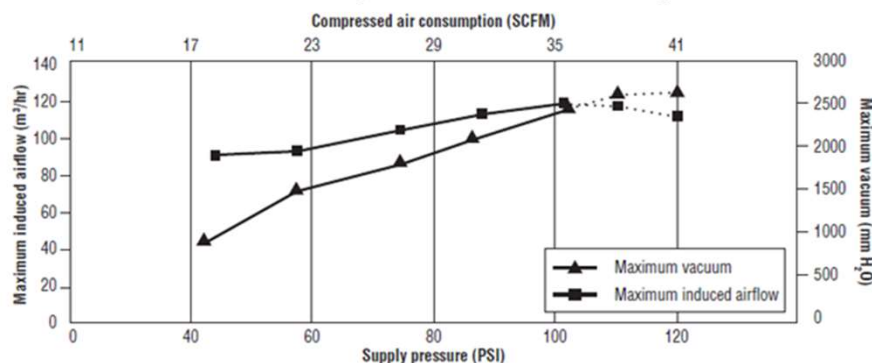
## COMMISSIONING YOUR VACUUM CLEANER

Attach the antistatic air supply hose to the air inlet port on the control valve. Do not over-tighten the connection. Do not use any form of liquid thread locker or PTFE tape to seal the thread. The threaded end fitting has its own integral O ring seal. If you use liquid thread sealer or PTFE tape, you may create an insulated barrier so that any static build up cannot dissipate to earth down the air supply hose.

To the other end of the air supply hose, fit a metal (conductive) fitting to suit your air outlet sockets. Make sure the pipework and outlet fittings of your air supply system are constructed entirely of metal, and are suitably earthed. Finally, using a 500 volt megohmmeter, measure the resistance between the body of the vacuum cleaner and the metal air supply pipe. The reading must be no more than 50 M ohm (5 x 10<sup>7</sup> Ohm).

## PERFORMANCE/COMPRESSED AIR REQUIREMENTS

The AV range does not require the air supply to be dried, filtered or to have oil mist removed. It is advisable to use an air supply that can be regulated so that the performance of the unit can be adjusted to suit the operator. The performance is related to the air input. The more pressure/volume of air input, the more suction/induced airflow is generated. However, using excessive air input wastes compressed air, generates unnecessary noise, may cause implosion of the canister and/or bursting of the Microfibre bags/filters.



**Note:** Optimum performance is achieved at an air input pressure of 90 - 120 psi (6.2 bar – 8.3 bar)

## OPERATING INSTRUCTIONS

Connect to a suitable compressed air supply. Attach the antistatic hose assembly to the canister, connect the stainless steel bent hose end and wands. Choose and attach one of the antistatic tools supplied. To activate, turn the lever on the control valve through 90°. The performance of the vacuum cleaner can be controlled with the control valve, but it is advisable to fit a regulator and pressure gauge at the air outlet point of your compressed air supply. The maximum pressure must be no more than 120psi (8.3 Bar).

## CARRYING & STORAGE

The assembled cleaner can be moved around using the flip/flop handle on the motor head or by means of the tubular handle (models on caddy only). **It must NOT be dragged around by means of the air supply hose.**

When not in use disconnect the machine from the compressed air supply. This vacuum cleaner should be stored indoors in a dry environment.



## RISK ASSESSMENT (ATEX)

If this vacuum cleaner is used for collecting flammable/explosive materials or within a zoned area classified under the ATEX Directive 2014-34 EU then a risk assessment must be carried out by a competent person to verify the suitability of the application.

The risk assessment will be the responsibility of the customer/end user and should take into account (but not be limited to) the characteristics of the material being collected such as: -

1. Spark ignition sensitivity
2. Hot surface ignition sensitivity (cloud)
3. Hot surface ignition sensitivity (layer)
4. Explosion severity
5. Flammable gas generation
6. Burning behaviour
7. Thermal instability
8. Chemical instability
9. Static electricity generation
10. Impact of collected material
11. The ATEX certification code for the appliance being assessed.  
(See the rating plate on the machine).

## RISK ASSESSMENT (TYPE H)

If this vacuum cleaner is used for collecting dust and debris which may be hazardous to health if inhaled, ingested or in contact with the skin then a risk assessment must be carried out by a competent person to verify the suitability of the application.



The risk assessment will be the responsibility of the customer/end user and should take into account but not limited to the characteristics of the material being collected such as: -

1. The occupational exposure limit of the dust and debris being collected.
2. The particle size of the dust and debris being collected.
3. The method of disposal.

## FILTRATION SYSTEM

This compressed air powered Type H vacuum cleaner is fitted with 3 stages of filtration on the negative pressure side of the air motor. That is, before the air motor, so that the air motor always receives clean filtered air.

### **1<sup>st</sup> Stage: K4 Microfibre Bag**

The disposable bags are made from Microfibre material. This material offers better filtration efficiency, greater tear resistance from sharp debris than paper bags and is less likely to burst when full of heavy dust/debris. Microfibre disposable bags are fitted with a moulded plastic flange and sealing cap. They are fitted over the inlet inside the canister and the dust/debris is collected inside the bag. The sealing cap is designed to prevent the escape of dust from the bag during the bag change and disposal process. When the bag is full or suction efficiency is impaired it should be replaced. Microfibre bags are not designed to be emptied and should not be reused.

### **2<sup>nd</sup> Stage: Antistatic Cloth Filter Assembly**

A conductive needle-felt cloth filtration media attached to a conductive rubber sealing ring and supported by a conductive plastic rigid filter frame.

### **3<sup>rd</sup> Stage: HEPA (High Efficiency Particulate Arrestor) Cartridge Filter**

Often referred to as the essential or absolute filter, it is designed to filter to a very fine particle size (0.3 - 0.6micron at an efficiency >99.995%) yet have a large enough surface area to give maximum vacuum performance.

**Note:** The casing of the HEPA filter housing is metal and is earth bonded to the body of the vacuum cleaner in order to dissipate any static built up in the HEPA filter.

**WARNING:** The appliance may contain dust hazardous to health. Emptying and maintenance operations including removal and renewal of dust collection bag must only be carried out by authorised personnel wearing suitable approved personal protection.

Do not use the appliance unless the full filtration system is fitted – Type H cartridge, antistatic high efficiency cloth filter and Microfibre bag. Failure to fit the complete system may cause premature clogging of the Type H cartridge and may also endanger health.



## FILTRATION SYSTEM CONTINUED...

**IMPORTANT:** The vacuum unit is designed to collect hazardous dusts: Therefore any dust found within the machine or on its filters may be dangerous to your health. Always take precautions.

## CLEANING / REPLACING THE FILTERS

**1st Stage – Microfibre Bag (293002420)** – Microfibre bags cannot be emptied and must be replaced when full, torn or holed.

**2nd Stage – Antistatic Cloth Filter (293001400)** – Clean only by vacuuming with another Type H ATEX vacuum cleaner. Replacements can be purchased from BVC.

**3rd Stage – HEPA (High Efficiency Particulate Arrestor) Cartridge Filter (293002460)** – HEPA filters cannot be emptied/cleaned and must be replaced with another suitable HEPA filter.

## LOSS OF SUCTION

If your cleaner loses suction power, first check that the hose and other accessories in use are not blocked. Then check that the filtration system is not blocked. The filtration system can be serviced as follows:

- |                       |  |
|-----------------------|--|
| Microfibre bags       | - If full, replace.<br>If burst, empty/clean out canister and replace.   |
| Cloth Filter Assembly | - This filter will become contaminated with dust during normal use and/or if the Microfibre bag is holed or burst. The dust must be removed only by vacuuming with another Type H ATEX vacuum cleaner. It is advisable to have a spare filter so that the machine itself can be used to vacuum dust off the contaminated filter. |

If any of the filters or Microfibre bags are damaged or holed they must be replaced with new items.

## DUST/DEBRIS DISPOSAL

(Operation carried out within a contaminated area)

This appliance contains dust hazardous to health. Emptying and maintenance operations, including removal and renewal of dust collection bag, must only be carried out by authorised personnel wearing suitable personal protection. Do not operate without the full filtration system fitted.

Disconnect the hose, fit the blanking cap on the hose entry, unlatch the toggle clips and remove the motor head/HEPA unit. Take care not to drop the motor head/HEPA unit. Remove the antistatic filter assembly and carefully release the disposable bag from the bag tube and lift out of the canister. Seal the disposable bag inlet using the integral cap on the bag collar. The disposable bag should be immediately placed in a suitably labelled impervious plastic bag and this bag sealed and disposed of in accordance with the current regulations. Fit new disposable bag over the bag tube inside the canister.

This vacuum cleaner is supplied with 5 spare Microfibre bags and a spare antistatic filter assembly. This (clean) spare filter should be used and the motor head/HEPA unit refitted.

The contaminated antistatic filter should now be cleaned by vacuuming and stored in a labelled plastic bag ready for future use.

## DECONTAMINATION

**Decontamination operations should only be carried out by competent authorised personnel equipped with suitable personal protection.**

Before removing the accessories/vacuum cleaner from the contaminated area:

- Accessories should be cleaned externally with a Type H vacuum cleaner.
- They should then be cleaned with an adhesive wipe, sealed at each end and sealed in a clear impervious bag. The bag should carry an appropriate warning label.
- The external surfaces of the bag should then be cleaned with an adhesive wipe.
- The vacuum cleaner should be cleaned externally with itself. The disposable bag and its contents should be removed and disposed of in accordance with the method described in the section titled Dust/Debris Disposal.
- The vacuum cleaner should then be cleaned externally with an adhesive wipe.
- The vacuum cleaner should be sealed in a clear impervious bag. The bag should carry an appropriate warning label.
- The external surfaces of the bag should then be cleaned with an adhesive wipe.
- The adhesive wipes must also be disposed of following hazardous waste precautions similar to that of the disposable bag.

## MAINTENANCE

Maintenance must be carried out in a suitable controlled area with local filtered exhaust ventilation and facilities for cleaning the area after servicing.

During maintenance always disconnect from the air supply.

Maintenance and cleaning must only be carried out by competent authorised personnel equipped with suitable personal protection. All parts must be regarded as contaminated and treated as such and, therefore, another Type H vacuum cleaner should be used and each component to be removed, cleaned prior to removal.

Items that cannot be satisfactorily cleaned are to be disposed of in impervious plastic bags in accordance with current regulations. All surfaces should be cleaned as they become exposed.

## OPTIONAL EXTRAS

**Hose & Accessory Basket** – zinc plated tool basket to prevent a build-up of static. It can be fitted by hanging from the two horizontal crossbars on the rear of the caddy. Suitable for models AV 30 & 45 Type H only.

## SERVICING & SPARES

If the machine needs any servicing, repair or spares, please contact your BVC dealer or BVC directly:

Tel: +44 (0) 23 9260 3700 or email: [service@quirepace.co.uk](mailto:service@quirepace.co.uk) or visit [www.quirepace.co.uk](http://www.quirepace.co.uk)

Please make a note of the model and serial number before making contact.

Before attempting any servicing of this appliance, decontaminate as described above and make sure you are protected from any dust which may still be present on or around the machine or any dust which may have collected on internal components.

The Type H cartridge filter is not reusable/cleanable and should be disposed of safely. When it becomes clogged and the vacuum performance of the appliance suffers or is no longer acceptable fit a new unit. Be careful when handling and fitting Type H cartridges as damage to the pleated element will affect the performance and may cause a leakage through the filter of unfiltered air.

## GUARANTEE

BVC products are guaranteed for 12 months against defective parts and workmanship. There are certain conditions that may invalidate this guarantee.

- a) This appliance must be correctly installed and used in accordance with these instructions.
- b) Servicing must be carried out by BVC authorised personnel only.
- c) The guarantee may be invalidated by unauthorised repair or modification to the appliance.

BVC may introduce modifications to their products from time to time and consequently the details given in this instruction book are subject to alteration without notice.

## RATING PLATE

The ATEX / UKEX certification code which is shown on the machines rating plate is made up as follows:-

**BVC** QUIREPACE LTD., 6 PENNANT PARK  
FAREHAM, PO16 8XU, UK  
[www.bvc.co.uk](http://www.bvc.co.uk)

Model No. **AV** Year. **20** **KG**

**UK CA** **CE** **Ex** **II 2 D Ex h IIIC T50°C Db**  
**II 2 G Ex h IIC T6 Gb**

Serial No.

ATEX Cert No. **EMT17ATEX0050X**  
UKEX Cert No. **EMA21UKEX0068X**  
TECHNICAL FILE REF: **AV15 - 45**  
ADVISED AIR PRESSURE 90 - 120PSI (6.2 - 8.3 BAR)

**The AV 15-45 range has been tested and approved by an independent test house**

ATEX Cert No. **EMT17ATEX0050X**

UKEX Cert No. **EMA21UKEX0068X**

**UK CA**

The **UKCA** mark (UK Conformity Assessed).

**CE**

The **CE** mark (European Conformity Assessed).

**Ex**

The distinctive community mark showing a product is suitable for use in an explosive dust and /or gas atmosphere

**II**

Equipment group II (surface industries)

**2**

Category 2 product

**D**

Explosive dust atmosphere

**G**

Explosive gas atmosphere

**Ex**

Explosion protection (letters below indicate type of protection)

**h**

Protection concept - Constructional safety (applies to the mechanical parts)

### **IIIC T50°C Db**

**IIIC**

Equipment group - Combustible dusts, Conductive Dusts

**T50°C**

Surface temperature for dust evaluation is less than 50°C

**Db**

Equipment protection level (Dust zone 21)

### **IIC T50°C Db**

**IIC**

Equipment group - Combustible gases, vapours and mists

**T6**

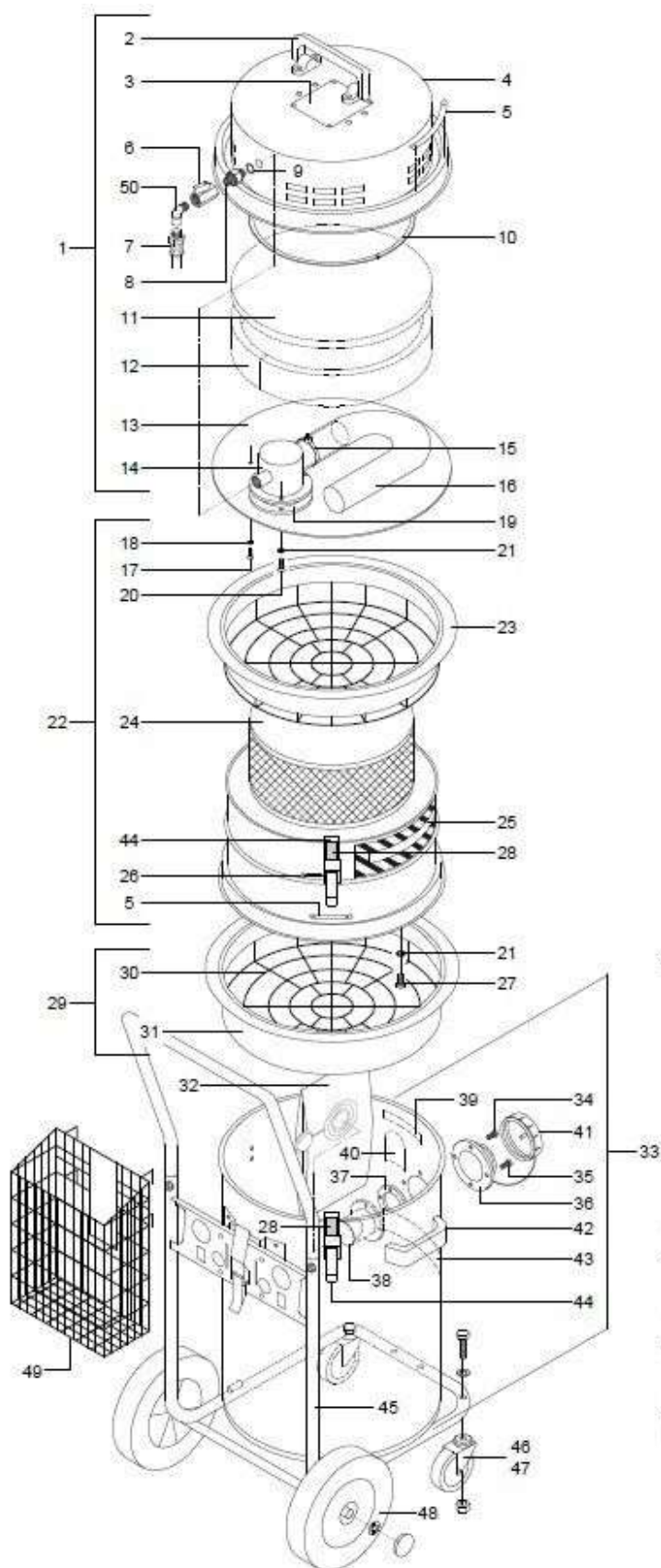
Surface temperature classification for gases, vapours and mists is less than 85°C

**Db**

Equipment protection level (Gas zone 1)



## SPARE PARTS – AV 30H & 45H – TYPE H



ITEM	QTY	DESCRIPTION
† # < 1	1	AV30H MOTOR HEAD & AIR SUPPLY HOSE AV45H MOTOR HEAD & AIR SUPPLY HOSE
† 2	1	A/S FLIP FLOP HANDLE ASSEMBLY
3	1	AV15-45H RATING PLATE
# 4	1	AV20-45 TOP PRESSING
⊗ 5	2	EARTH STRIP CURVED
6	1	BALL VALVE
< 7	1	AIR SUPPLY HOSE A/S 5 METRE
8	1	1/4 BSP MALE TO MALE NIPPLE
9	2	SOFT METAL WASHER
10	1	850 x 4 x 6mm FOAM RUBBER SEAL
11	1	FOAM SILENCING AV20-45 TOP
12	1	FOAM SILENCING AV15-45 SIDE
# 13	1	AV20-45 MOTOR PLATE
14	1	AIR MOTOR
15	1	TYRAP FOR SOUND ATTENUATION HOSE
16	1	500 x 38mm SOUND ATTENUATION HOSE
17	4	M4 x 12 PAN POZI SCREW
18	4	M4 SHAKEPROOF WASHER
19	1	GASKET FOR AIR MOTOR
20	3	M5 x 16 PAN POZI SCREW
21	9	M5 SHAKEPROOF WASHER
# 22	1	AV 30 & 45H HEPA FILTER ASSEMBLY
† □ 23	1	14" A/S SEALING RING & FRAME
24	1	AV 30 & 45H HEPA FILTER
25	1	TYPE H WARNING PLATE RED/WHITE
26	2	SPLIT PIN
27	6	M5 x 6 PAN POZI SCREW
28	2	CLIP HERE YELLOW LABEL 23 x 34mm
† □ 29	1	14" A/S FILTER ASSEMBLY
† 30	1	14" A/S FILTER FRAME
□ 31	1	14" A/S FILTER CLOTH
32	1	K4 MICROFIBRE BAG
† ⊗ 33A	1	AV30H CAN ASSEMBLY
† ⊗ 33B	1	AV45H CAN ASSEMBLY
34	2	M5 x 20 PAN POZI S/STEEL SCREW
35	2	M5 x 16 PAN POZI S/STEEL SCREW
† 36	1	HOSE ENTRY SPIGOT OUTER A/S
37	1	SPIGOT RETAINER FOR KAV
† ⊗ 38	1	AV S/STEEL DEFLECTOR
39	1	ATEX CATEGORY 2 BLACK ON YELLOW LABEL
40	1	ZONE 1/21 WARNING LABEL
† 41	1	A/S BLANKING CAP & STRAP
† 42	2	A/S CURVED SURFACE HANDLE WITH SCREWS & WASHERS
43	1	RED/SILVER LABEL
44	4	KV20-110 CLIP FOR METAL HEAD
⊗ Δ † 45	1	AV 30 & 45 CADDY ASSEMBLY S/STEEL (WITH A/S WHEELS & CASTORS)
Δ 46	1	75mm A/S CASTOR UNBRAKED WITH NUT, BOLT & WASHER
Δ 47	1	75mm A/S CASTOR BRAKED WITH NUT, BOLT & WASHER
† ▽ 48	2	200mm A/S WHEEL WITH LOCK WASHER & YELLOW CAP
49	1	AV 30 & 45 HOSE & ACCESSORY BASKET
50	1	1/4" BSP ELBOW MALE TO FEMALE (KAV45H ONLY)

A/S = ANTI-STATIC / CONDUCTIVE

### SYMBOL LEGEND

- A/S NEEDLE FELT WITH 12 x 12mm S/STEEL MATRIX & CONDUCTIVE THREAD
- † CRITICAL COMPONENT FOR EXPLOSION PROTECTION CONCEPTS
- † A/S PLASTIC COMPONENT IN CARBON LOADED POLYPROPYLENE  
EITHER: TBA ECP 110 OR LATISTAT 47/7-03
- Δ A/S PLASTIC WHEEL & TYRE: TENTE 2470 YGO 075 P30-11  
AND TENTE 2477 YGO 075 P30-11
- A/S BLACK EPDM RUBBER SEAL: HARLTEX E53B
- ▽ A/S BLACK RUBBER TYRE: INJECTAPLAS CRUMB RUBBER COMPOUND  
STD 71022170
- < CONDUCTIVE PVC LINER: TRICOFLEX/INDUSTRIAL ANCILLARIES AS10-16-100Y
- # PAINTED IN CONDUCTIVE PAINT: INTERPON 700 EN348E
- ⊗ STAINLESS STEEL 304 GRADE



## 38mm TOOLS – AV – TYPE H (OPTIONAL EXTRAS)



Item	Part Number	Quantity	Description
1A	29 03801 00	1 off	Hose Standard Duty 3.0m PVC Anti-Static
1B	29 03801 01	1 off	Hose Standard Duty 6.0m PVC Anti-Static
2	29 03802 00	1 off	ATEX Bend 30 Degree Stainless Steel
3	29 03803 00	1 off	ATEX Extension Arm 470mm Stainless Steel
4	29 03808 10	1 off	ATEX 38 Crevice Tool Anti-Static 300mm
5	29 03807 10	1 off	ATEX 38 x 70mm Dusting Brush Anti-Static
6	29 03806 10	1 off	ATEX 38 x 100mm Dusting Brush Anti-Static
7	29 03817 00	1 off	ATEX 38 x 375mm Heavy Duty Floor Tool with Brushes Anti-Static



## UK/EC DECLARATION OF CONFORMITY

### UK/EC DECLARATION OF CONFORMITY (INDUSTRIAL VACUUM CLEANERS)

Manufacturer :- Quirepace Ltd, Pennant Park, Fareham, Hants, PO16 8XU

The following Notified Body has been involved in the conformity assessment process:

**Notified body & No:** Element Materials Technology / 0891

**ATEX Certificate No:** EMT17ATEX0050X

**UKEX Certificate No:** EMA21UKEX0068X

We QUIREPACE LTD DECLARE UNDER OUR SOLE RESPONSIBILITY THAT THE PRODUCT (S) DESCRIBED BELOW: -

**AV Air Vac.** COMPRESSED AIR POWERED, PORTABLE VACUUM CLEANERS TO COLLECT NON-HAZARDOUS, HAZARDOUS AND WET OR DRY DUST/DEBRIS AND NON-FLAMMABLE LIQUID.

<b>AV30</b> AIR VAC W/D - ATEX G1D21	55 64184 00	Serial No:	FB
<b>AV30</b> AIR VAC TYPE H - ATEX G1D21	55 64186 00	Serial No:	FC
<b>AV45</b> AIR VAC W/D - ATEX G1D21	55 64711 00	Serial No:	FH
<b>AV45</b> AIR VAC TYPE H - ATEX G1D21	55 64712 00	Serial No:	FJ

To which this declaration relates is/are in Conformity with the following Standards or other normative documents: -

BS EN ISO 80079-36:2016	Non-electrical equipment for potentially Explosive atmospheres. Basic method and requirements.
BS EN ISO 80079-37:2016	Non electrical equipment for potentially Explosive atmospheres. Protection by constructional safety 'c'.

The pneumatic parts of the AV range have been constructed in accordance with ISO4414:2010. Pneumatic fluid power – General rules and safety requirements.

#### Certification code



Technical file No: AV15-45. Quirepace House, 6, Pennant Park, Standard Way, Fareham, Hants PO16 8X

#### Specific conditions of use:

- 1 The equipment is supplied with a conductive air supply hose. It is the end user's responsibility to ensure a good earth connection is maintained at the compressed air connection whilst the machine is in use.
- 2 Air compressors used to supply the pneumatic system must incorporate a filter on the intake to avoid ingress of dust or foreign material and must employ only lubricants which are resistant to ignition or carbonisation within operating temperature range.
- 3 Equipment not to be used with pyrophoric or self-reactive dusts.
- 4 Equipment must only be used in conjunction with supply hose and accessories supplied with the machine.
- 5 The equipment must never be used to pick up glowing dust/particles or other ignition hazards.
- 6 The vacuum cleaner is not suitable for picking up dusts with an ignition energy of less than 1mJ.

Registered Office: 6 Pennant Park, Fareham, Hants. PO16 8XU

Registered in England No. 1748970

**BVC**

Following the provisions of the directives: -

ATEX Directive

2014/34/EU

Machinery Directive

2006/42/EU

 M Brown

G Hall / M Brown

Senior Engineers



R Pescott

Managing Director

DATE 01/11/2022