

### GREENLINE 1M MAXIBAG

The BVC 1M Maxibag is ideal for construction site and medium duty industrial applications where the advantages of the Longopac™ collection system are required.

BVC 1M Maxibag has a powerful 1200W turbine which when combined with a 20m continuous bag collection system, delivers a versatile machine suitable for many cleaning jobs.

BVC 1M is fitted with a 1500W auto-start tool take-off socket and a filter clog indicator light. The tank assembly can be raised and lowered for transport and is supported by gas struts for easy handling.

**20m Longopac™ continuous bag collection**

**Powerful 1.2kW 2-stage turbine**

**2470 mmH<sub>2</sub>O Vacuum 210 m<sup>3</sup>/hr Flow**

**Gas strut supported tank, lowered for transport**

**Large 60mm tangential inlet**

**Polycarbon prefilter protects main filter**

- Versatile site vacuum with Longopac™
- Auto-start auxiliary tool power take-off socket
- Polycarbon antistatic pre-filter protects against clogging



Our filter materials are compliant with the H13 and H14 HEPA categories described in BS EN 1822-2:2009 and also conform to the equivalent standards described in ISO 29463-1:2011

# GREENLINE 1M MAXIBAG

	Max Vacuum Exhauster mmH <sub>2</sub> O	Max Flow Rate Exhauster m <sup>3</sup> Hr	Wet Collection	Longopac™ Collection System	Collection Volume	Hepa Filter	Polycarbon Filter Protector	Sound Pressure Level dB(A)	LxWxH
1 x 1.2kW 110V 1PH 50Hz	2470	210	No	Yes	20m	Opt	Opt	72	590x590x1131/1460
1 x 1.2kW 230V 1PH 50Hz	2470	210	No	Yes	20m	Opt	Opt	72	590x590x1131/1460



110v version: 32A 110v plug allows safe use of power take off at maximum 1500W.

Site-safe, easily seen, yellow arctic cable helps to avoid trip hazards.



110v version: 1500W power take off for tool connection with Auto start.



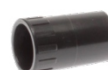
FTDP00222 PCB Poly Carbon Bag pre-filter. Antistatic material protects the HEPA filter. Anti-static material helps prevent filter clogging - dust drops away when machine is switched off.



FTDP00489 Polyester cartridge filter



The complete tank assembly can be lowered on easy to use gas struts to reduce the height of the unit for transportation.



Supplied with full toolkit including 2.5m x 38mm hose and strong aluminium & plastic composite tubes.

