

Quirepace LAMSON

PNEUMATIC TUBE SYSTEMS

AERONAUTICAL
AIRPORTS
AUTOMOTIVE
CHEMICAL
CHEMICAL PROCESSING
DRINKS INDUSTRY
ELECTRICAL & ELECTRONIC
ENGINEERING
FOOD PROCESSING
FOOD HANDLING
LABORATORIES
LOGISTICS INDUSTRY
MARINE INDUSTRY
HOSPITALS
METAL INDUSTRY
MILITARY
MOTOR INDUSTRY
PAPER INDUSTRY
PHARMACEUTICAL
PLASTICS
PRINTING & PUBLISHING
RETAIL INDUSTRY
STORAGE & DISTRIBUTION
SUPERMARKETS
TRANSPORT
WAREHOUSING



Can save time and money



Moves things to where they're needed helping save lives



Moves cash to a safe or secure area in seconds



Quirepace Lamson have the experience and knowledge to move some unusual samples

THE UK'S LEADING TUBE SYSTEM RESOURCE



Quirepace LAMSON

PNEUMATIC TUBE SYSTEMS



Quirepace Lamson systems are significantly increasing efficiency and security, and saving money in thousands of applications throughout the UK and Europe

Our systems are at work in all types of environments from major hospitals, leading supermarket groups and theme parks to banks, convenience stores and laboratories. In fact there's hardly an application where smaller items need to be moved that we haven't been involved with. Take a look at some of the system uses on the next page and chances are you will find an application like yours.

SIX COMPELLING REASONS TO TALK TO QUIREPACE



1. Our background

Lamson were pioneers of the pneumatic tube system and probably did more than any other company, in the late 19th century, to develop the whole concept of pneumatic conveying in buildings. In fact well into the 20th Century the name Lamson and pneumatic tube systems were synonymous. By 2000 the company had a large share of the cash conveying market. At the same time Quirepace Ltd were installing an increasing number of systems in hospitals and laboratories as well as cash conveying systems in supermarkets. The natural progression was a combination of their unique knowledge and resources to form one highly skilled design and installation company.



2. Our system knowledge and advice

As designers and builders of systems over many years, there is hardly a conveying project we haven't been involved in. Today's systems may surprise you with just how much they have to offer.

This experience means we can provide valuable help in defining the most cost effective parameters for your pneumatic tube system. Enabling you to maximise its use, build in flexibility if needed for future development and help avoid costly over or under specification.



3. Our system planning, design & build

Unlike many companies we draw upon a wealth of tried and tested components to build systems or we can design, modify and manufacture components for special applications.

We can make unique controls, stations and tube profiles with a whole variety of features for individual needs. So we are not bound by trying to make 'the need' fit a system of standard components - we can truly offer a system that meets 'the need'.



4. Our products

Quirepace & Lamson products are tried and tested. Most components operate in routine and essential services through the UK and Europe, where they are providing long robust service.

Our aim is to provide systems that operate smoothly year after year, require little maintenance and minimal downtime. If you want to know how we do - ask our users.



5. Our diversified installations

We operate in an extremely diverse range of industries from hospitals to iron and steel production, from supermarkets and theme parks to nuclear and laser laboratories.

It is this experience of diversification that enables us to tackle virtually any challenge we are confronted with. Why not see if we can help you.



6. Our back up and support

To ensure any downtime is kept to a minimum we have engineers located throughout the UK who are fully equipped to service and maintain a complete range of systems and equipment.

Many of the systems installed within the past 10 years can be accessed by modem or internet. Our service centre provides remote customer diagnostic support.

We offer maintenance contracts that can be tailored to fit particular requirements as well as enhanced management contracts that combine service, maintenance and facility management into a single service contract.



A GUIDE TO QUIREPACE SYSTEMS

The table gives you useful information on the types of system available from Quirepace Lamson. It is important to remember that many applications do not require highly sophisticated functions. This has nothing to do with the exceptional build quality of the system or its components but a guide to the capability and complexity of system functions. All systems can be tailored or redesigned by our engineers to meet specialist requirements. The diagrams below will help to explain or simply call our system specialist on 02392 603700.

System type		Max no. of stations	Tube diameter options	Degree of sophistication (see below)	Typical users
Hydra	Single Direction Multi-point	40	63	**	Supermarkets, Theme parks Multiplex cinemas
Cashline	Single Direction Multi-point	5	45, 63 or 110	**	Retail
Multicash	Single Direction Multi-point	30	75	***	Supermarkets, Retail
Diana	Dual direction between master and remote stations	7	90,110 or 160	***	All
	Point - to - Point	2	75, 90, 110 or 160	**	All
Neptune	Full intercommunication between all stations	20+	110 or 160	****	Healthcare, Retail, Warehousing, Logistics Security, Cinemas
Atlas Minerva	Full intercommunication between all stations across multiple zones	100+	110, 160 or 200	*****	Healthcare Large Estates
75s & 100s	Dual Direction High speed Point to point	2	75 or 100	**	Steel Industries Foundries
Beaufort	Dual direction Point to point	2	Rectangular	**	Specialist Retail

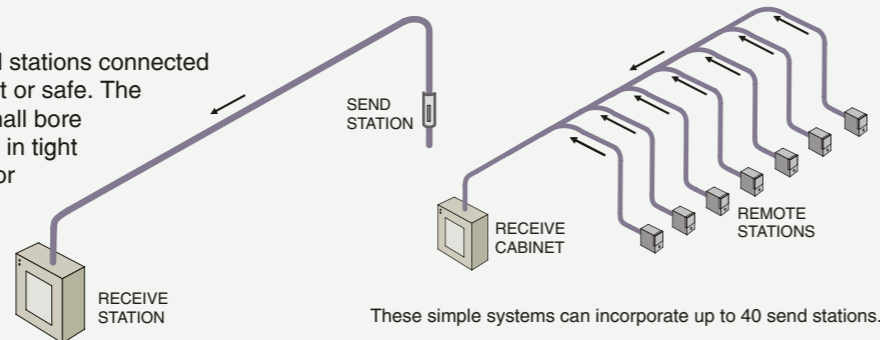
Degrees of sophistication Simple * - Highly sophisticated *****
Remember applications may not require sophisticated multi-control features and complex capabilities

1. Simple one-way systems

The simplest system with a choice of send stations connected directly to a receive station, secure cabinet or safe. The carrier travels one way only and where small bore pipework is used it can be easily installed in tight locations. Can be used with rigid carriers or convenient cloth flight bags.

Benefits

- Inexpensive ● Easily installed
- Easy to maintain ● Simple ● Secure

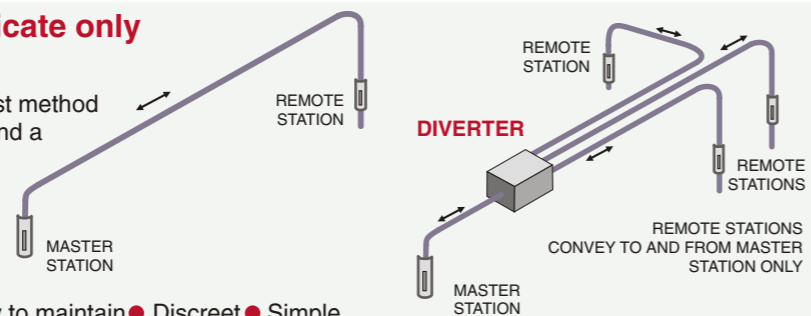


2. Two-way systems that communicate only with a Master Station

The diagram shows a Diana system - the simplest method of sending and receiving from a master station and a remote station. By adding a diverter the system can accommodate up to 6 remote stations all communicating to and from the master station.

Benefits

- Secure ● Easily installed ● Inexpensive ● Easy to maintain ● Discreet ● Simple

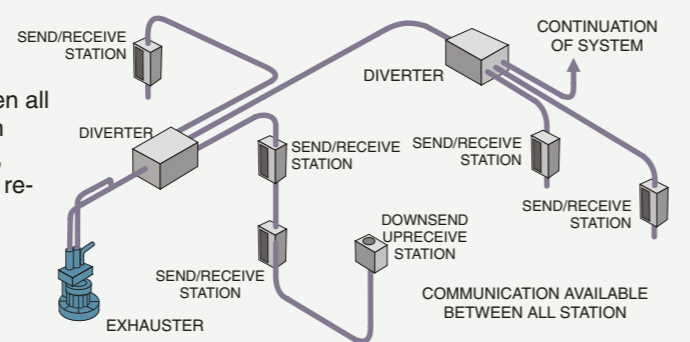


3. Systems offering full communication between all stations

For larger environments requiring full communication between all stations, with many functions under the control of the system administrator. These might include priority routes and sends, restricted communication between secure stations, recipient re-direct, etc. and multi system network capability.

Benefits

- Very versatile ● Full communication
- System functions under users administrator
- Discreet stations for public areas ● Fast secure transfer ● Cost effective ● Easy to maintain ● Easy to use ● Secure



APPLICATIONS

Quirepace Lamson supply and install systems for all types of applications in all types of environments. You will be able to see the most common systems used and from system pages the benefits of each. Depending on your needs we can plan and install a system that's right for you.



HOSPITALS

Our systems are operating in 100's of hospitals throughout the UK and Europe. Some with over 150 stations. These can be single systems or complete networks of 10 or more interconnected systems.

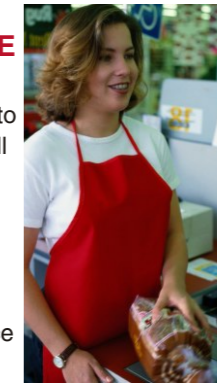


DEPARTMENT STORES, THEME PARKS, ATTRACTIONS, MULTIPLEX CINEMAS & RESTAURANTS

All have the same need - collecting cash from diverse areas around a building or site and transferring it to the cash office. It can be difficult and expensive. We design and install single direction and two way systems that can operate over many floors and often quite remote locations such as distant car parks or ticket offices using overhead or underground tube runs.

SUPERMARKETS, FORECOURT TRADERS & CONVENIENCE STORES

Once cash starts to accumulate in a till it becomes an increasing risk to staff, customers and the takings. A system will significantly reduce the risk, reduce cash handling costs and provide significant logistical benefits. There are several systems we supply depending on the requirement.



OFFICES, BUSINESS & STORES

Moving paperwork and small items is not only tedious and time consuming but can be costly particularly when fast turnaround is essential. Transferring items between buildings particularly in rain, during winter or across a busy road can also be a problem. We are solving these problems in many existing locations.



HIGH SPEED SAMPLING

Sampling material before unloading is often essential for quality control. Our systems will convey the sample directly from check in point to the lab in seconds, whatever the weather, location or distance. During production, sampling is often a vital part of the process too. Systems we have installed convey everything from milk samples, flour during milling, even extremely high temperature steel.



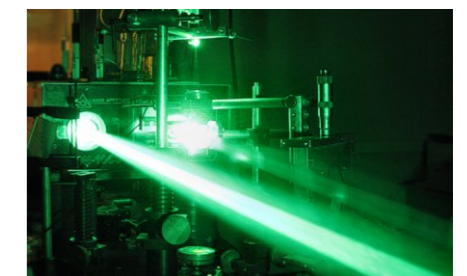
BANKING & HIGH SECURITY

The movement of cash or jewellery always presents a risk particularly when moving high value items to and from the safe or secure area. We have installed systems in banks, building societies and jewellers throughout the UK. The systems increase security and save time and money.



LOGISTICS, FREIGHT STORAGE & HANDLING

Moving documents and paperwork over even moderate distances is time consuming, expensive and can severely delay handling procedures. See how the problems can be overcome and significant benefits achieved with a relatively simple, inexpensive system such as the Diana or Neptune.



SPECIAL SYSTEMS

As one of the UK's leaders in pneumatic tube systems we have designed and installed some very special systems. We are conveying, positioning and retrieving targets for the most advanced laser technology - the Orion project. We have square tube systems in film processing labs, positive pressure systems for clean areas and much more besides.

DIANA SYSTEMS

One of the most popular systems

The Diana System has been installed in countless applications over the last 35 years

One of the simplest and most widely used systems available. The Diana can be a basic point-to-point system for sending carriers between a remote station to/from a master station and can also be used with diverters to add up to six secondary stations which can all send and receive from the master station.

Diana systems are extremely competitively priced and once installed can be expected to operate for many years with minimal attention. Non standard carriers can be supplied for specialist applications if required.

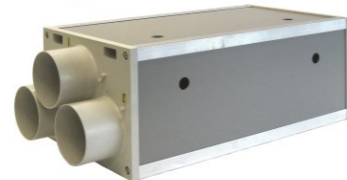
Versions are available in all tube sizes 60mm, 75mm, 90mm, 110mm or 160mm diameter.



The sliding sleeve station

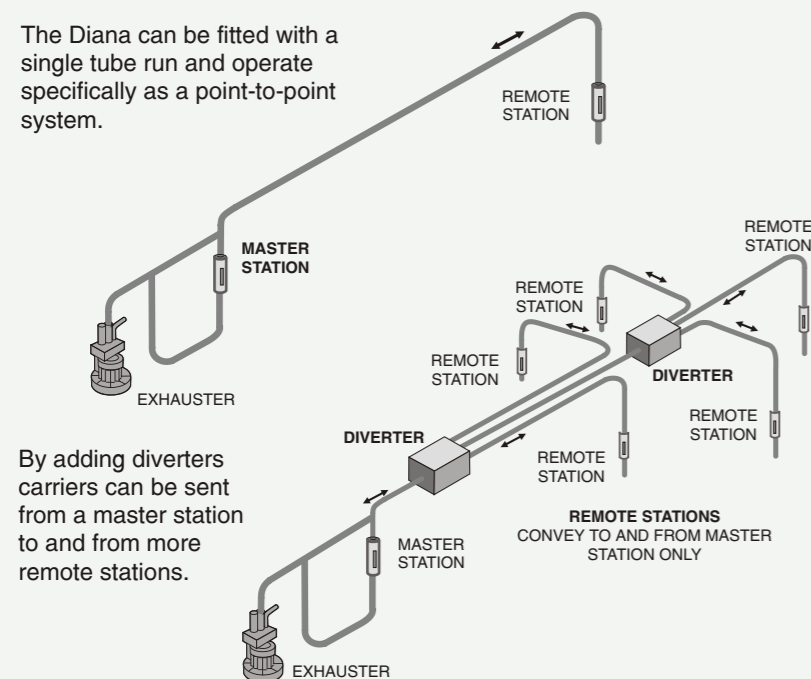
DIVERTER

At any interchange throughout the system. They act like points on a railway and allow for the installation of additional stations.



A Diana System layout

The Diana can be fitted with a single tube run and operate specifically as a point-to-point system.



By adding diverters carriers can be sent from a master station to and from more remote stations.

Main users include

- Department Stores
- Offices
- Banks
- Distribution & Warehouses

In fact anywhere a small 'no nonsense' system is required with a master station being able to send and receive with up to 6 secondary stations

BENEFITS OF THE SYSTEM

- Transports items where they are needed in seconds
- Secure transfer of items
- Saves substantial time and money
- Can be located across a wide area - over several floors or at a distant location
- Increases flexibility of building layout as departments can now be located anywhere on site
- Backed up by Quirepace and Lamson experience and service

FEATURES OF THE DIANA

- Low cost
- Extremely robust, long life and little maintenance
- Inexpensive to operate
- Short pay-back period
- Flexible, with a master station and up to 6 remote stations
- Can operate over long distances and virtually any number of floors
- Extremely easy to use

NEPTUNE

Extremely flexible microprocessor control and full 2-way capability

For more complex environments that need 2 way communications

The Neptune is a complete system that supports a wide range of stations from the Atlas range. This can be a straightforward sliding sleeve terminal, to the fully automated send and receive stations.

Every station is able to send to and receive from every other station in the system. Diverters are used (similar to switch points on a railway) to increase the system capability and number of stations.



The Neptune controller - the heart of the system

Main users include

- Health Services
- Department Stores
- Retailers
- Banks
- Multiplex Cinemas
- Attractions & Theme Parks
- Restaurants

BENEFITS OF THE SYSTEM

- Moves items where they are needed in seconds
- Secure transfer of items
- Reduces risks to staff whether conveying drugs in a hospital or cash in a department store
- Saves substantial time and money
- Can be located across a wide area - over several floors or at a distant car park or entrance
- Increases flexibility of building layout as departments can now be located anywhere on site
- Backed up by Quirepace and Lamson experience and service

Can include a wide variety of stations



Luna Station

Fully automatic 'end-of-line' station designed with failsafe soft carrier arrival. Clear display and easy to operate.



Zos Station

A powered 'downsend, upreceive' station for counter top fitting.



Saturn Station

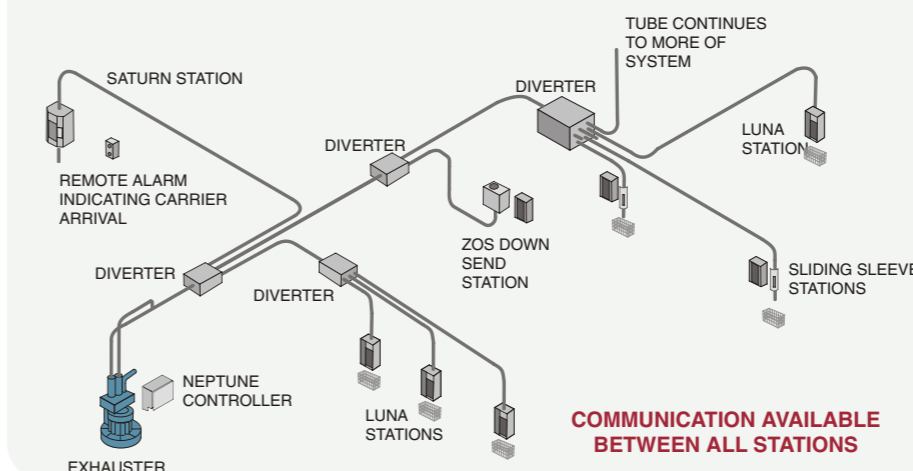
A through or end station. Quiet in operation. Failsafe soft carrier arrival. Clear display and easy to operate. Auto door close. 'Closed air' transfer.



Sliding Sleeve Station

A simple end-of-line station receiving a carrier behind a sliding sleeve door where space or demand is limited.

Diagram to illustrate elements of a Neptune System



FEATURES OF THE NEPTUNE

- Complete 2 way capability
- Flexible controller
- Clear and easy to programme system
- Can use choice of Quirepace stations
- Can be equipped with carrier arrival alarms
- Printer connection option for registering time and date of sends
- Air brake/soft arrival of carriers.

ATLAS PC - MINERVA

The most widely specified systems for hospitals & healthcare in the UK

Enables systems to be linked to form an extremely sophisticated multi-system network

The Atlas is a highly developed tube system specifically designed to provide advanced solutions to the many and quite specific problems of conveying and portering in hospitals and healthcare centres. It has been installed in over 40 countries worldwide and many of the major hospitals in the UK.



The Atlas PC can be a single system or a network of independent systems, all linked, and all controlled by the extremely powerful Atlas PC software. University College Hospital, London has 20 systems including the latest 'train ride' which allows multiple carriers in a single tube.

The most important factor in planning and designing a network is understanding the movement and frequency of sends at each proposed location, the material to be conveyed, and the creation of dedicated priority routes for emergency use.

It is not uncommon that client expectations are regularly set out, and project specifications issued against those requirements. However the way the network is used after installation can often turn out to be very different to that expected. This is where our experience at an early stage can prove invaluable if the pitfalls are to be avoided and the most cost effective solution is to be established.

An important feature of the Atlas PC is that apart from linking all the departments in the hospital, priority routes can be assigned enabling urgent sends such as blood, tissue samples and drugs to be where they are needed in seconds.

BENEFITS OF THE SYSTEM

- Transfers things where they are needed - in seconds
- Operates continuously 24/7
- Provides a direct link to radiology, phlebotomy, ITU, pharmacy, A&E, wards, etc.
- Transports almost anything that fits into a carrier patient records, documents, laboratory samples, drugs, etc
- Significantly increases nursing efficiency
- Increases portering efficiency
- Increases security
- Reduces ward discharge time
- Creates new opportunities in building layout and services
- Short pay-back
- Complies with all hospital standards and requirements
- Backed by Quirepace and Lamson experience and service

FEATURES OF THE ATLAS

- Proven performance across 40 countries worldwide
- Carrier storage
- Highly sophisticated PC controls all systems
- Truly modular system that is completely expandable
- Multi-level send and receive priority
- Capacity for high speed carrier server
- Track and Trace

Carriers

Wide choice of carriers including standard carriers, lockable carriers, leakproof carriers, blood carrying carriers and transponder equipped carriers that can return to specific locations.



SOME ATLAS NETWORK COMPONENTS

The Atlas PC & Software

The heart of the network with its special to purpose PC dedicated software. It controls all the functions of all the systems within the network. Users are provided with 'real-time' graphical carrier activity and management data covering transactions.



FEATURES OF THE ATLAS CONTROLLER

- Full carrier transaction log database
- System protection by electronic keys
- Real time 'live' graphical carrier activity
- Carrier tracking
- In the event of power breakdown the controller keeps all selected destinations of the carriers in transit in its memory
- Controlled reject through exchange process rather than indiscriminate discharge of rejected carriers
- In the event of failure the system switches automatically to control the distribution of carriers when power is restored
- "Follow-me" function can be set at each station allowing carriers to be forwarded to any location the recipient chooses.
- User identification options by touch keys

Diverters and System Interchanges



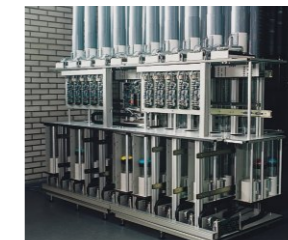
Diverter

At any interchange throughout each system three and six way diverters can be installed. They can be cut into the transmission tube at anytime for the installation of additional stations. They are noiseless and virtually maintenance free.



Diverter Coupler

These are a relatively straightforward way of linking up to four systems. They have separate send and receive tubes to each system which create a bypass effect allowing transfer between all systems simultaneously for maximum efficiency.



Linear Coupler

These unique devices are used as central holding and distribution centres for carriers in transit. Their large storage capacity and very high throughput rates reduce queues on busy networks, provide faster access to stations and significantly increase network efficiency.

Stations



Saturn Station

Designed for hospitals. Made from closed cell material. Wipeable membrane keypad. A through or end station. Quiet in operation. Failsafe soft carrier arrival. Clear display and easy to operate. Auto door close. 'Closed air' transfer.



Luna Station

Fully automatic 'end-of-line' station designed with failsafe soft carrier arrival. Clear display and easy to operate.



Zos Station

A powered 'downsend, upreceive' station for counter top fitting.

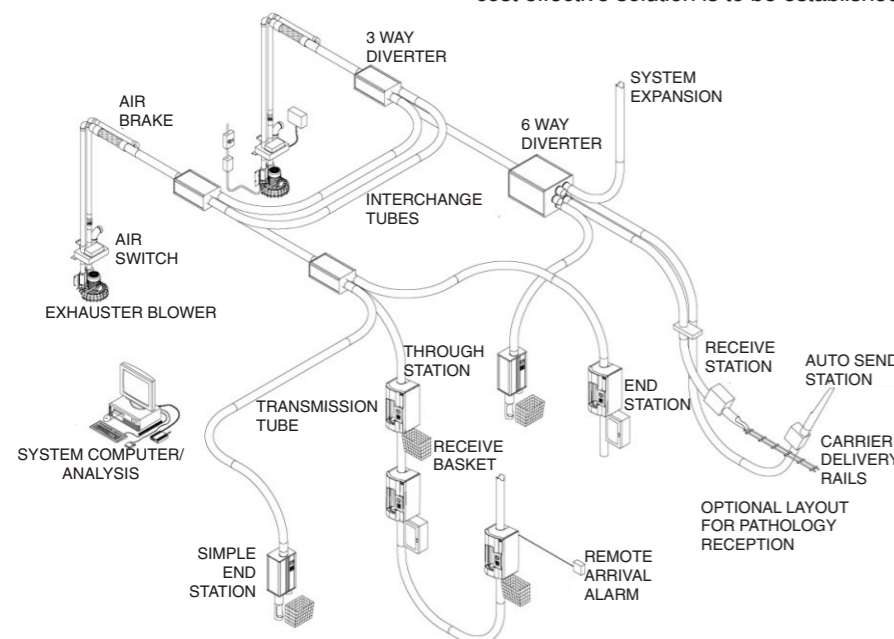


Receive Station with rails and an Auto-send Station

A flatbed station for high capacity bench top receive activity. Often used in conjunction with auto-send stations.

FEATURES OF THE ATLAS STATIONS

- Wide variety of station options and functions
- Guaranteed soft arrival of fragile payloads by airbrake
- Reduced speed option (for example sending blood samples)
- At each station information is available on the system status (ready to send, busy, arrived at destination etc.)The station display provides a directory of stations available
- Fixed selection of destination codes can be set at each station
- Return carrier to sender function
- Radio carrier identification (RCI)
- Track and trace options
- Backed up by Quirepace and Lamson



Elements of an Atlas System

The diagram gives an indication of the way a network might operate in a large hospital showing how all the locations can be linked by a combination of systems.

CASH AND SECURITY SYSTEMS

For all types of environments and applications

MULTICASH

The leading product for cash handling in large retail outlets and supermarkets

Connects up to 30 send stations with the cash office with only one main tube run

The Multicash is a one way system that utilises swept junctions to link all the stations into the main tube run. Consequently it is relatively simple and inexpensive. It does however offer a great many features.

One of the most important benefits of the Multicash is that carriers can be securely loaded into the send stations at anytime - even if the system is busy. The system will then determine when to activate the send.

The Multicash uses 75mm diameter tubes which allow small radius bends and easy installation, alteration or extension even in tight environments. The system will operate over a distance up to 250m from the cash office and will carry a payload of up to 100 bank notes.

The system processor has a large number of useful functions including: time last carrier sent and time of arrival, a running log of the last 1000 transactions, carrier counts for individual stations and total system and individual station ON/OFF control. Another major feature of the system is the stations can be mounted for up, down or horizontal sending and can be fitted with an extremely useful intercom/paging system.



A Multicash send station with optional intercom



A receive cabinet in the cash office

Main users include
Supermarkets
Superstores
Large Retail Outlets

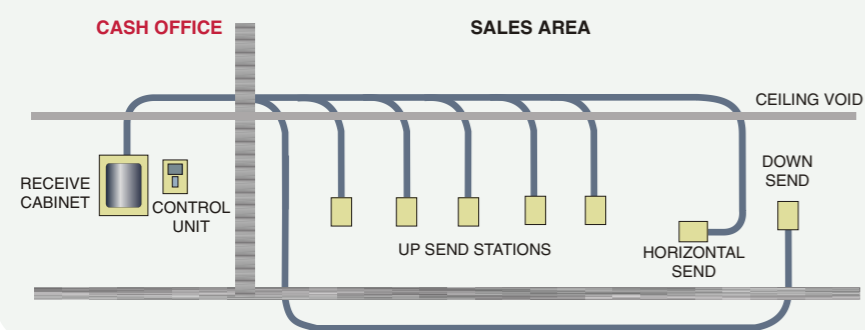
BENEFITS OF THE SYSTEM

- Reduces risks to staff and customers
- Conveys cash directly to a safe or secure area in seconds
- Secure area can be situated in most convenient location
- No need for supervised pick-ups thereby reducing costs and eliminating unsettling presence of security staff
- Transferring cash throughout the day further reducing costs
Short pay-back period
- Backed up by Quirepace and Lamson experience and service

FEATURES OF THE MULTICASH

- Outstanding value
- Carriers can be loaded in send station when system is busy
- 2 systems can deliver to one cabinet
- Carrier speed up to 6m per second
- Can be supplied custom coloured to suit decor
- Run from only a single phase 13amp supply
- Optional intercom
- Very flexible system that can be adapted to suit many environments and easily altered or extended
- Multifunction microprocessor control
- Dual systems can operate to a single secure cabinet

A Multicash System Layout



HYDRA

A system capable of sending from multiple checkout stations utilising a common tube run - economical to install, run and maintain

The main advantage of this type of system is all the stations are linked directly into the main tube run by swept junctions (see below). This makes the Hydra relatively simple and extremely cost effective. Using 60mm diameter tube makes it easy to locate beneath the floor or in ceiling voids. One exhaustor unit provides vacuum for 11 to 40 send stations linking them directly to a choice of safes or cabinet in the secure area. Sends to a safe or secure area can be made anytime by simply rolling bank notes into the easy to store fabric carrier and inserting it into the send station. The Hydra is one of the most commonly used send stations with this system. It is lockable, compact and can be discreetly located in the checkout knee space. Lights on the station indicate that the carrier is in transit.



The Hydra send station

Main users include
Supermarkets
Multiple Checkout Outlets
Theme Parks

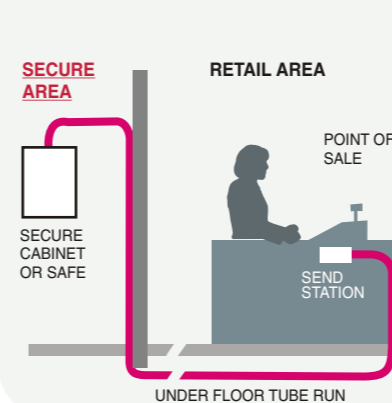
BENEFITS OF THE SYSTEM

- Reduces risks to staff and customers
- Conveys cash directly to a safe or secure area in seconds
- Secure area can be situated in the most convenient location
- No need for supervised pick-ups thereby reducing costs and eliminating unsettling presence of security staff
- Transferring cash throughout the day further reducing costs
- Short pay-back period
- Backed up by Quirepace and Lamson experience and service

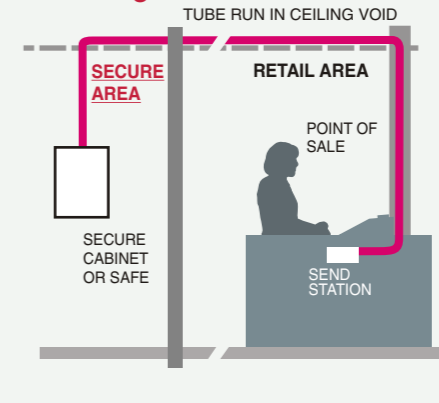
FEATURES OF THE HYDRA

- Small bore and single tube mean economical installation and running
- Fast transfer speeds
- Discreet, low profile
- Extremely easy to use
- Inexpensive to operate
- Convenient fabric carriers
- Max send stations 40

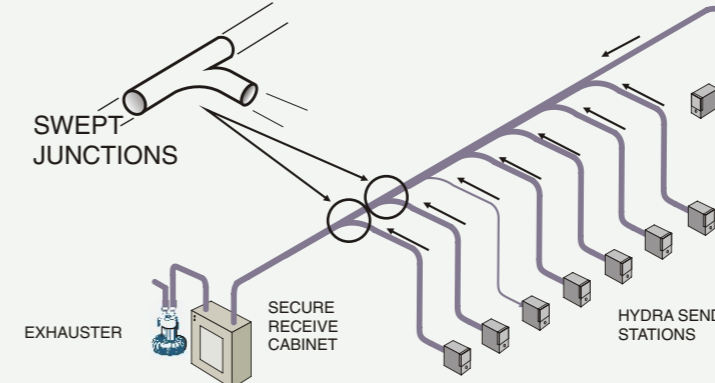
Underfloor Tube Run



Ceiling Void Tube Run



TYPICAL HYDRA SYSTEM LAYOUT



The Hydra can be fitted with choice of send and receive stations

CashLine

A range of system options

Designed to offer a low cost solution to conveying cash from the retail area to a secure area or safe

Illustrated is a Cashline 45 small bore station that is easily concealed and flexible enough to fit in extremely tight situations.

Sends can be made at anytime by simply putting notes into the small plastic carrier and inserting the carrier into the send station. Inserting the carrier automatically activates the source of vacuum - transferring the carrier to the safe.



A Cashline 45 send station

Main users include
Convenience Stores
Petrol Forecourt Traders
Late Night Traders

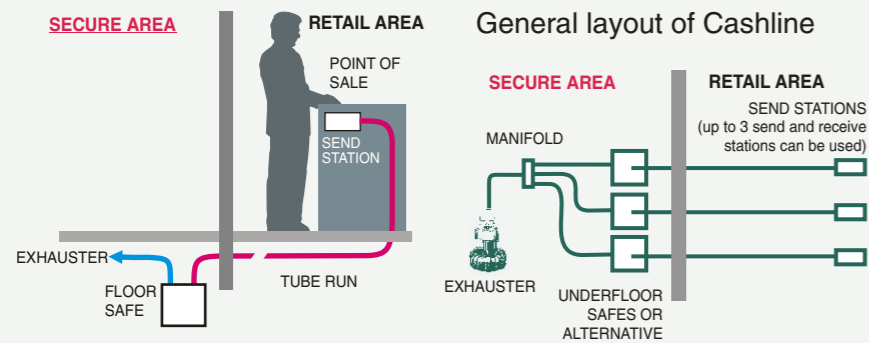
BENEFITS OF THE SYSTEM

- Reduces risks to staff and customers
- Conveys cash directly to a safe or secure area in seconds
- Safe or cabinet can be located almost anywhere on the site
- No need to leave areas unsupervised or cease trading while moving cash
- Reduces cash handling costs by transferring cash throughout the day
- Short pay-back period
- Backed up by Quirepace and Lamson experience and service

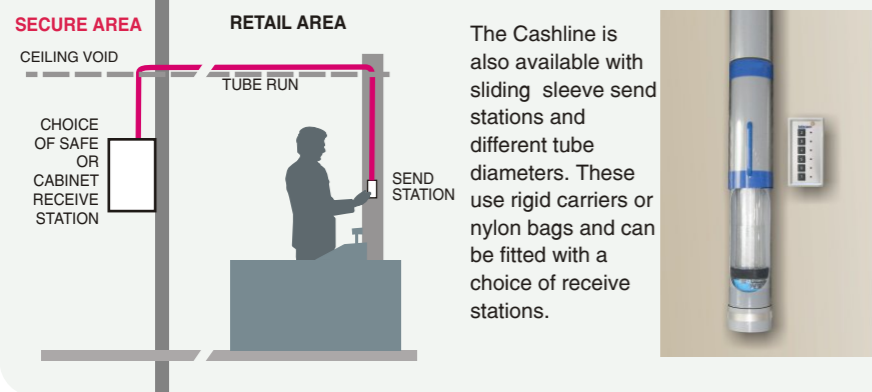
FEATURES OF THE CASHLINE

- Low cost
- Very flexible narrow bore tube makes it extremely easy to install even in situations with tight bends
- Choice of safes or receive cabinet
- Inexpensive to operate

Under Counter Versions



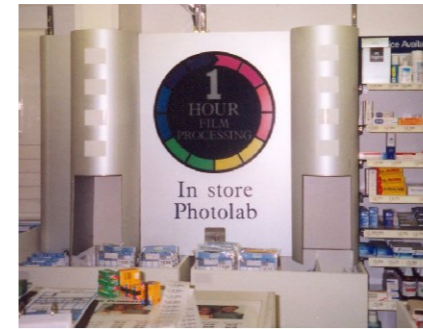
Sliding Sleeve Versions



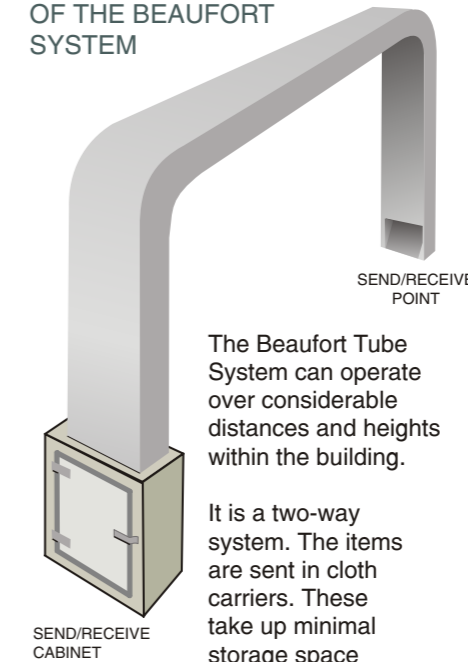
The Cashline can be fitted with choice of receive stations including secure cabinets, floor or free standing safes.

BEAUFORT

A simple rectangular tube point-to-point system designed for sending small packages such as those used in film processing



SCHEMATIC TO SHOW PRINCIPLE OF THE BEAUFORT SYSTEM



The Beaufort has been specially designed for applications where a rectangular tube would provide distinct advantages over a round tube. A typical example would be sending photographic prints between a counter and the processing lab.

In store, the open ended send station can be easily concealed within the shopfitting and decor. At the processing end is a send/receive cabinet complete with air brake for soft arrival - particularly important if disposable cameras are to be sent.

The Beaufort Tube System can operate over considerable distances and heights within the building.

It is a two-way system. The items are sent in cloth carriers. These take up minimal storage space and can be colour coded if required.

BENEFITS OF THE SYSTEM

- Conveys items to destination in seconds
- Savings in logistical costs
- Operates throughout the day further reducing costs
- Allows re-planning of building layout to maximise retail areas
- Eliminates staff portering
- Unique design - ideal for rectangular items
- Outstanding value
- Simple to install in new and existing buildings
- Easy to operate
- Requires only a single phase 13amp supply
- Cloth carriers that can be colour coded
- Carriers take up little storage space
- Backed up by our extensive experience and service

75s HIGH SPEED SAMPLE TRANSFER

High speed sample transfer - vital in metal production and foundries

A system developed for use in the demanding environment of a steel production facility and large foundries, where speed of transfer of samples is critical. The 75s provides rapid transmission speeds necessary - between 10 and 20 metres per second. Typical hot sample 'lollipops' are contained within special-to-purpose carriers to ensure they are safely transferred to the laboratory for analysis. Systems are configured in point-to-point links to ensure dedicated service between the production and test facilities for fast reliable turn round.

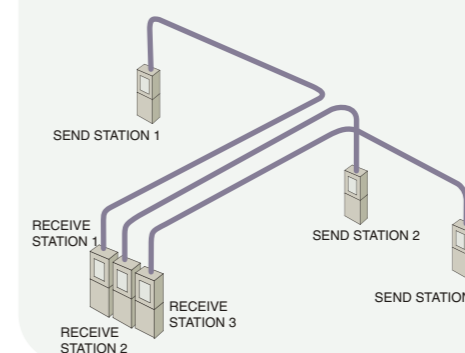
Operating in what may be harsh surroundings, the systems are manufactured in durable materials, terminals in steel cabinets, and transmission tubes in stainless steel. Manual or automatic interface is also possible for today's integrated solutions.



BENEFITS OF THE SYSTEM

- Designed to handle high temperature and heavy samples
- High speed transfer
- Robust construction
- Compressed air braking
- Easily installed
- Can be driven by compressed air or blowers
- Conveys samples to destination in seconds
- Enables fast response to production processes
- Savings in logistical costs
- Operates anytime day or night
- Allows re-planning of building layout if needed
- Eliminates staff portering
- Backed up by Quirepace and Lamson experience and service

A typical 75s system layout



SPECIAL SYSTEMS

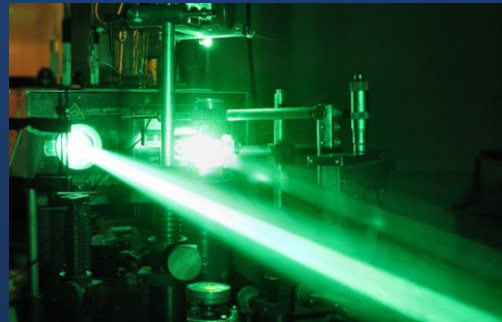
Quirepace Lamson are at the leading edge of pneumatic tube system technology. Our specialist knowledge, design capability and engineering skills mean there is hardly an application we have not been asked to solve. From rectangular tube systems in film processing laboratories and special systems to move heavy loads, to the most delicate positioning of samples in laboratory facilities where absolute accuracy is required.



Conveying prints in a film processing laboratory (The Beaufort System. Left - the discreet send station)

All applications can be designed and developed in-house from first concept to final installation.

Why not talk with one of our specialists about your application - you may find that it will be more straight forward than you think. What is more you'll be able to find out what increase in efficiency you might expect from a system and the sort of return on investment the system might generate.



Conveying, positioning and retrieving targets on the Orion project

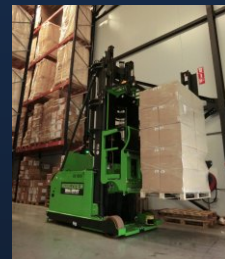
Quirepace LAMSON

PNEUMATIC TUBE SYSTEMS

THE UK'S LEADING TUBE SYSTEM RESOURCE

AGV - Automated Guided Vehicles

With the inclusion of an AGV team we can now offer an even wider range of effective solutions to conveying and materials handling. Contact us for details.



Products and services from other Quirepace companies include:



Industrial Vacuum Cleaners



Central Vacuum Cleaning Systems



Exhauster/Blowers Air & Vacuum Pumps



Quirepace

HARBOUR ROAD, GOSPORT, HAMPSHIRE, PO12 1BG UK
Tel: +44(0)2392 603700 Fax: +44(0)2392 504648
email: enquiries@quirepace.co.uk www.quirepace.co.uk

Quirepace
BVC LAMSON