

# **BVC** *Greenline*

**BVC 2-90WD-110**

**BVC 2-90WD-230**



## **Original Instructions**





THE CE MARK “EUROPEAN COMPLIANCE” MEANS THAT THE PRODUCT IS IN ACCORDANCE WITH THE ESSENTIAL REQUIREMENTS PROVIDED BY THE LAW, CONCERNING SAFETY AND PUBLIC HEALTH MEASURES, PROTECTION OF THE CONSUMER, ETC.



WARNING: THESE SYMBOLS WILL BE USED TO REMIND THE OPERATOR TO PAY ATTENTION TO OPERATIONS THAT MAY CAUSE INJURIES, OR EVEN DEATH, TO THE OPERATOR OR TO OTHER PEOPLE OR ANIMALS NEARBY. FURTHERMORE, THE OPERATIONS INDICATED BY THESE SYMBOLS MAY CAUSE DAMAGES, EVEN IRREPARABLE ONES, TO THE SUCTION DEVICE.



ATTENTION: PLEASE READ CAREFULLY THE INSTRUCTION MANUAL BEFORE USING IT. IT IS RECOMMENDED TO KEEP THIS MANUAL FOR FUTURE REFERENCES.



DO NOT DISPOSE OF POWER TOOLS INTO HOUSEHOLD WASTE! ACCORDING TO THE EUROPEAN DIRECTIVE 2012/19/EU ON WASTE ELECTRICAL AND ELECTRONIC EQUIPMENT (WEEE) AND ITS INCORPORATION INTO NATIONAL LAW, POWER TOOLS THAT ARE NO LONGER SUITABLE FOR USE MUST BE SEPARATELY COLLECTED AND SENT FOR RECOVERY IN AN ENVIRONMENTALLY FRIENDLY MANNER.

## INTRODUCTION

This manual describes your vacuum cleaner features.

It is the owner's responsibility to make sure that the vacuum cleaner is used by people informed about this handbook of instructions.

It is not permitted that the owner modify, uses or tampers with the vacuum cleaner for purposes different from those described in this handbook, otherwise the warranty is no longer effective and exempt the manufacturer from every responsibility for possible damages to people or things.

In case of loss or damage of the handbook, please contact the manufacturing company.

In case of sale of the vacuum cleaner please attach this handbook of instructions to the machine or inform the buyer about the manufacturing company.

The vacuum cleaner is fully tested before delivery, in order to ensure good performance of the appliance. This is done according to strict internal procedures and with modern yearly certified electrical tests.

## INTENDED USE

Appliance designed to pick up dust and liquids.

Sturdy, powerful and easy to use, it is also equipped with efficient tools, for rapid and complete cleaning.

This vacuum cleaner is suitable for collective use: for example in hotels, schools, factories, shops, etc.

## INSTRUCTIONS THAT MUST BE STRICTLY FOLLOWED - SAFE USE

Read carefully the manual before use, in order to work in a safe environment.



**Warning: Before using the appliance, the device must be correctly assembled. Check that all the filter elements are in place and efficient.**

- This appliance must be kept out of the reach of children, of people with reduced physical, sensory or mental abilities or lacking of experience and knowledge.
- CAUTION: Children must be kept under control, do not allow children to use the appliance as a toy.
- WARNING: Users must be properly trained to use the machine.
- CAUTION: Components used in packaging (ex: plastic bags) can be dangerous; keep away from children, animals and people not aware of their actions.
- To correctly dispose of the packaging follow the local standards in force.
- Make sure that the voltage of electrical mains is the same as that indicated on the rating plate of the vacuum cleaner. Verify that the socket is compatible with the plug. Power cable must always be unrolled before using the appliance. Do not use the cable coiled.
- Do not handle/use plug or appliance with wet hands.
- Do not pick up anything that can damage the filter elements (such as glass, metal etc.).
- Do not use the electrical cord to move or lift the machine.
- Never immerse the machine in water and never use a pressure jet of water to clean the machine.
- Do not use this appliance beyond 2000 m (6560 ft) above sea level.
- WARNING: This machine is not suitable for picking up dangerous dust.

- CAUTION: Don't pick up flammable, incandescent, explosive or toxic dust/blends. Maximum temperature allowed is 40°C (104°F).



**Warning: Any application not described in this manual is potentially dangerous, therefore it must be avoided.**



**Warning: Do not leave a working machine unsupervised. Always unplug the machine if the appliance is not working. Keep away from children and from people not aware of their actions.**

- WARNING: This appliance must be used, assembled, fixed and moved on a safe and not sloping plane.
- WARNING: This appliance must be stored, taking its weight into consideration, on a solid, steady, safe and not sloping plane, indoor and in a dry area.
- WARNING: Keep hands, feet, ears, loose clothing, hair and all parts of the body (human or animals) away from openings.
- WARNING: If the appliance is provided with a supplementary socket, do not use a tool exceeding the power reported on the socket. Non-observance of these rules could result in damages and injuries even lethal to the user.
- Do not allow the power cord to come into contact with the rotating brushes of the carpet cleaning head.
- Warning: Use only original spare parts. Using other accessories might compromise the operator's safety.
- Warning: This machine is not suitable for picking up dust in environments where electro-static discharges or spark can cause damages to electronic components and persons.



**Warning: it is forbidden to tamper or modify the appliance. Failure to comply with these instructions could cause serious accidents and damages to the user, that can also lead to death. Tampering will void the warranty.**



**The manufacturer refuses all responsibility for damages or injuries due to improper use of the machine or in case of failure to comply with the instructions given in this manual.**



**Always disconnect power cord from power source before carrying out maintenance. After every use and before sending the appliance to technical assistance, the vacuum cleaner must be disassembled, cleaned and overhauled to avoid hazard for the maintenance staff.**

- Do routine maintenance. Inspect gaskets seals, plastic parts, filters, switches and replace those which have begun to leak or are damaged.
- Using a machine with a damaged power cord could result in electric shock. Check the cord looking for cuts, cracks or aging signs and replace it, if it's necessary.
- Only an authorized service centre can replace power cord of the appliance.
- If extension cables are used, ensure that the cable rating is suitable for use with the equipment. Keep dry at all times. Avoid contact with conductive surfaces.
- Don't let children clean the appliance if they are not under supervision of an adult.

- Only an authorized service centre can do repair or maintenance of the appliance. Use only original spare parts.
- To keep the appliance fully functional it is necessary to clean polyester filter shaking it after every use and replace filter bag when it's full.
- Clean every part of the appliance after each use: empty the tank, shake the filters, replace filter bag if it's full and clean the machine with a damp cloth before storing the vacuum cleaner.
- **WARNING:** in case of foam or liquid leak switch off the appliance immediately.
- **WARNING:** in case overturning, lift the appliance in the upright position before switching the motors off.



**WARNING: The additional socket must be used only with the appliance in dry mode (while vacuuming dusts). Failure to comply with this rules can lead to fires and dangers even lethal to the user.**

- Don't pick up water from sink or tub. Do not use cleaner as a pump to clean out blocked drains, sinks, or other plumbing fixtures. The vacuum cleaner is intended for vacuuming air and water mixtures.
- Do not use or pick up aggressive soaps, they could damage the appliance.



**WARNING: The float valve has the function to stop the vacuuming when the tank is full of liquids or in case of overturning; carry out cleaning routine checking that there are no damages and change it if it's necessary.**

- **WARNING:** Do not use outdoors or in a cold environment.

## NOISE

Values measured according to EN 60704-1 (1997) / EN 60704-2-1 (2001) ISO 3744 standards.

Motors	Lp <sub>A</sub> [dB]	Kp <sub>A</sub> [dB]	Lw <sub>A</sub> [dB]	Kw <sub>A</sub> [dB]
1	70 ÷ 76	2.5	-	-
2	74 ÷ 80	2.5	-	-
3*	78 ÷ 84	2.5	92 ÷ 98	2.5

**\*Wear hearing protection.**

## VIBRATIONS

Hand-arm vibrations on the suction hose are less than 2,5 m/s<sup>2</sup> as recommended by ISO 5349-1

Under adverse network conditions, the appliance may cause temporary drops in voltage.

## **COMPONENT DESCRIPTION (PAGE 8)**

- A - Motor head
- B - Switch
- E - Hooks
- F - Tank
- H - Inlet
- I - Castor wheels
- K - Main polyester filter. Use only for dry pick up (not for wet pick up).
- L - Filter bag to apply on top of deflector. This filter does not exclude the use of polyester filter, that still has to be used.
- M - Wand
- N - Flexible hose
- O - Hose
- P - Double use brush
- P1 - Squeegee
- P2 - Dust brush
- Q - Crevice tool
- R - Upholstery nozzle
- S - Round brush
- G - Adaptor
- T - Speed regulator (optional)
- U - Electric floorhead additional socket (optional)
- V - Warning light (optional)
- X - Electric tool additional socket (optional)

## **DRY PICK UP (page 9)**

Insert main polyester filter into the tank (Fig. 1).

Mount the head on top of tank and lock it with hooks (Fig. 3).

Push hose into hose inlet (Fig. 4).

Attach wand and desired tool to hose ends (Fig. 5).

If your vacuum is equipped with paper bag, slide paper bag over the deflector (Fig. 7).

Plug power cord into a properly grounded outlet and turn cleaner on (Fig. 6).

## **WET PICK UP (page 9)**

Remove main polyester filter from the tank (Fig. 2).

Mount the head on top of tank and lock it with hooks (Fig. 3).

Push hose into hose inlet (Fig. 4).

Attach wand and hoses to hose end (Fig. 5).

Attach squeegee -P1- to the other end.

Plug power cord into a properly grounded outlet and turn cleaner on (Fig. 6).

## **BLOWER FEATURE (page 9)**

Push hose into blower port placed on the vacuum head. Turn the switch on.

## **IMPORTANT INFORMATIONS ABOUT OPTIONAL VERSIONS:**

### **Appliance with floor head additional socket (optional)**

The socket -U- it is designed to connect a floor head.



**WARNING: Maximum power allowed is 200W.**

**Don't connect electrical floor brushes with a bigger load. This may result in a fire hazard or electric shock.**

### **Appliance with electrical tool additional socket -X- (optional)**

To connect electrical tool. Please see additional manual.

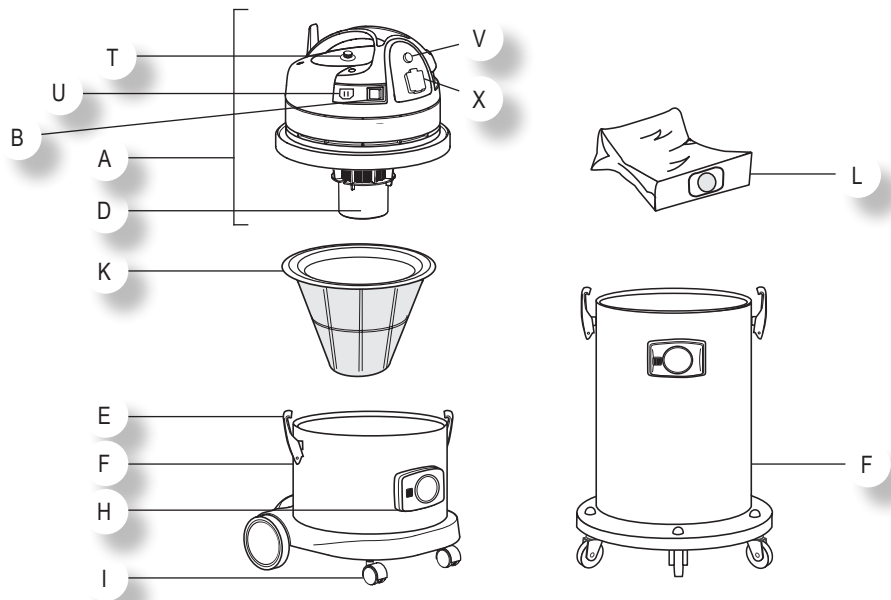


**WARNING: If the appliance is provided with a supplementary socket, do not use a tool exceeding the power reported on the socket. Non-observance of these rules could result in damages and injuries even lethal to the user.**

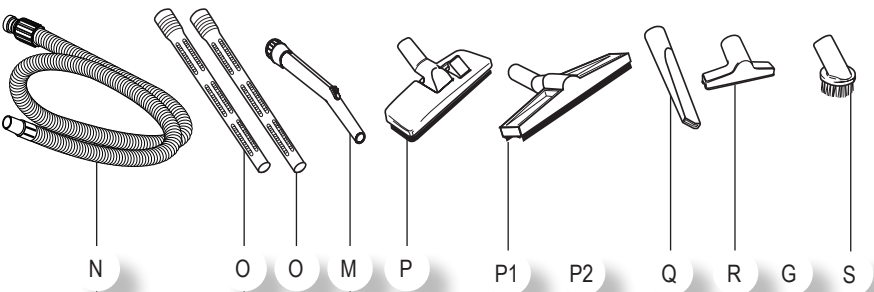
### **Appliance with speed regulator (optional)**

With speed regulator -T- you can increase or lower vacuum suction power.

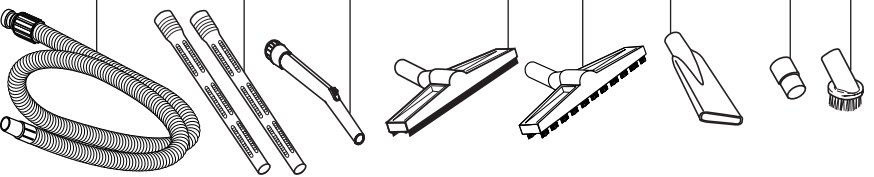
COMPONENTS DESCRIPTION



Ø36

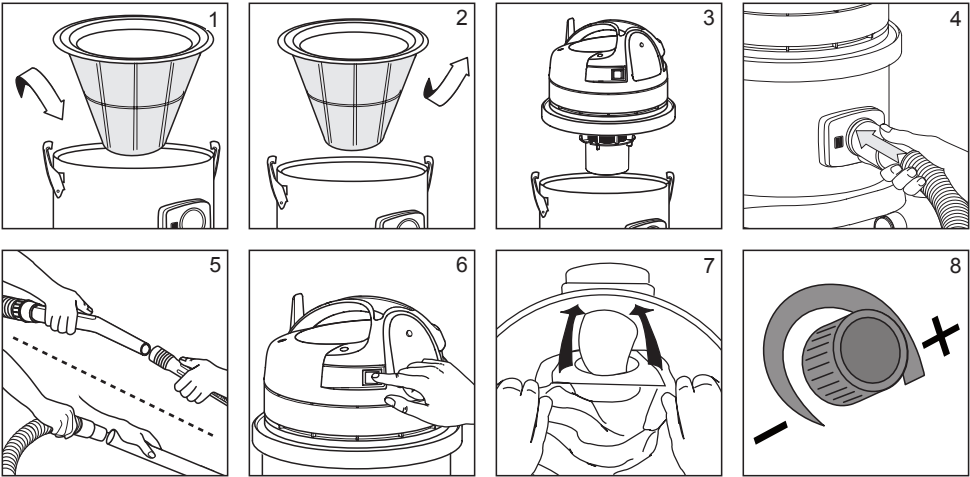


Ø38

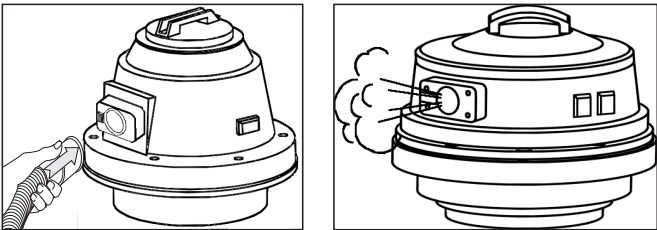




**LIQUIDS/DUST PICK UP**



**BLOWER FEATURE**



N.B. Drawings reported are merely indicative.

# WARRANTY CONDITIONS

Quirepace Ltd, guarantees the parts of the appliance that prove to be faulty for 12 months. If within the warranty period any defect appears in the goods, Quirepace undertakes to remedy such defect either by repairing the Goods or by replacing them, whichever Quirepace shall choose,

PROVIDING that –

- a) Full details of such defect are notified to Quirepace in writing within 10 days if it first appearing; and
- b) The buyer affords Quirepace access at any time during normal business hours for repairing or replacing the defective goods; and
- c) The buyer affords Quirepace free access at any time during the warranty period and during normal business hours to inspect the goods.

BUT this warranty SHALL NOT APPLY to following:

- Defects arising from fair wear and tear, misuse, neglect or failure to carry out maintenance procedures or fitting instructions recommended by Quirepace.
- Defects in the goods resulting from modifications to the goods or to related equipment by someone other than Quirepace.
- Defects in the Goods where the identification numbers or marks on such goods or on equipment in relation to which the goods are used have been altered or removed.
- Defects resulting from use of any part or attachment or equipment fitted by someone other than Quirepace.
- Traction batteries, in which case, manufacturers guarantees apply.
- The above warranty does not apply to hoses, brushes and accessories which are classed as consumable items.

For spares and accessories please contact:

**Quirepace Ltd**

Quirepace House  
6 Pennant Park  
Fareham, Hampshire  
PO16 8XU UK

Tel: +44 (0) 23 9260 3700  
Fax: +44 (0) 23 9250 4648  
admin@quirepace.co.uk  
www.quirepace.co.uk





**IP CLEANING S.r.l.**

*Sede Legale - Registered Office*  
Viale Treviso n°63 fraz. Summaga  
30026 Portogruaro (VE) ITALY

*Sede produttiva - Production premises*  
Via E.Fermi, 2  
26022 Castelveverde (CR) ITALY

I	DICHIARAZIONE CE DI CONFORMITA'	E	DECLARACIÓN CE DE CONFORMIDAD
GB	CE CONFORMITY DECLARATION	NL	KONFORMITEITSVERKLARING CE
F	DECLARATION DE CONFORMITE CE	N	BEKREFTELSE OM OVERENSSTEMMELSE CE
D	CE KONFORMITÄTSERKLÄRUNG	P	DECLARAÇÃO CE DE CONFORMIDADE

**2006/42/CE (Machinery Directive)**  
**2014/30/UE (Electromagnetic compability EMC)**  
**2011/65/CE (Directive ROHS II)**

I - DICHIARIAMO SOTTO LA NOSTRA ESCLUSIVA RESPONSABILITÀ CHE IL PRODOTTO AL QUALE QUESTA DICHIARAZIONE SI RIFERISCE È CONFORME ALLE SEGUENTI NORME O AD ALTRI DOCUMENTI NORMATIVI:

GB - WE DECLARE ON OUR OWN RESPONSIBILITY THAT THE PRODUCT TO WHICH THIS DECLARATION REFERS IS IN ACCORDANCE WITH THE FOLLOWING RULES OR WITH OTHER DOCUMENTS CONTAINING OFFICIAL RULES:

F - NOUS DÉCLARONS SOUS NOTRE EXCLUSIVE RESPONSABILITÉ QUE LE PRODUIT AUQUEL CETTE DÉCLARATION SE RÉFÈRE EST CONFORME AUX NORMES SUIVANTES OU À D'AUTRES DOCUMENTS QUI CONTIENNENT NORMES OFFICIELLES:

D - AUF UNSERER ALLEINVERANTWORTUNG ERKLÄREN WIR, DASS DAS PRODUKT, WORAUF SICH DIESE ZUSTIMMUNGEN BEZIEHT, FOLGENDEN NORMEN ODER ANDEREN VORSCHRIFTEN GEMÄSS IST:

E - BAJO NUESTRA EXCLUSIVA RESPONSABILIDAD, DECLARAMOS QUE EL PRODUCTO, AL QUE ESTA DECLARACIÓN SE REFIERE, ES CONFORME CON LAS SIGUIENTES NORMAS U OTROS DOCUMENTOS NORMATIVOS:

NL - WIJ VERKLAREN ONDER ONZE EXKLUSIEVE VERANTWOORDELIJKHEID DAT HET PRODUCT: WAAROP DEZE VRKLARING BETREKKING HEEFT, KONFORM IS AAN DE VOLGENDE NORMEN EN AAN ANDERE DAARVAN DEEL UITMAKENDE DOCUMENTEN:

N - VI FORSKRER UNDER EGET ANSVAR AT FOLGENDE PRODUKT SOM OMFATTES AV DENNE BEKREFTELSEN ER I OVERENSSTEMMELSE MED VILKÅRENE I FOLGENDE DIREKTIV ELLER ANDRE LOVER:

P - DECLARAMOS SOB A NOSSA EXCLUSIVA RESPONSABILIDADE QUE O PRODUTO AO QUAL ESTA DECLARAÇÃO SE REFERE ESTÁ EM CONFORMIDADE COM AS SEQUINTES NORMAS OU OUTROS DOCUMENTOS NORMATIVOS:

**IEC 60335 - 1:2010+A1:2013 - EN 60335-1:2013+A11:2014**  
**IEC 60335 - 2 - 69:2012 - EN 60335-2-69:2012 - EN 62233: 2008**  
**EN 55014 - 1:2006+A1:2009+A2:2011**  
**EN 55014 - 2:1997+A1:2001+A2:2008**  
**EN 61000 - 3 - 2: 2014 - EN 61000 - 3 - 3: 2013**

Person authorised to compile the technical file  
Persona autorizzata a compilare il fascicolo tecnico  
**IP Cleaning S.r.l.**  
Via E.Fermi, 2 26022 Castelveverde (Cremona) - ITALY

Legal Representative  
Rappresentante legale  
**Federico De Angelis**

Castelveverde, 01/06/2018