

BVC *Greenline*

BVC 1-41M-110

BVC 1-50M-110



Original Instructions

Certificate for vacuuming of dust type “M”

According to Regulation EN 60335-2-69 PAR.AA6



THIS MACHINE IS SUITABLE TO PICK UP DUST AND SMALL DEBRIS. IT IS NOT SUITABLE FOR COLLECTING LIQUIDS. IT IS STURDY, POWERFUL AND EASY TO USE. THE EASY TO USE TOOL KIT SUPPLIED OFFERS A FAST, EFFICIENT COMPLETE CLEANING SOLUTION. THE MACHINE IS SUITABLE FOR COMMERCIAL USE, E.G. HOTELS, SCHOOLS, HOSPITALS, FACTORIES, OFFICES, SHOPS ETC.



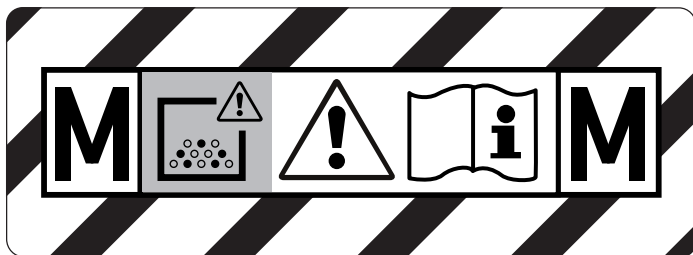
WARNING: PLEASE READ THIS MANUAL CAREFULLY. BEFORE STARTING THE VACUUM CLEANER. KEEP THIS MANUAL IN A SAFE PLACE FOR REFERENCE.

Categories of use



Do not vacuum flammable liquids.

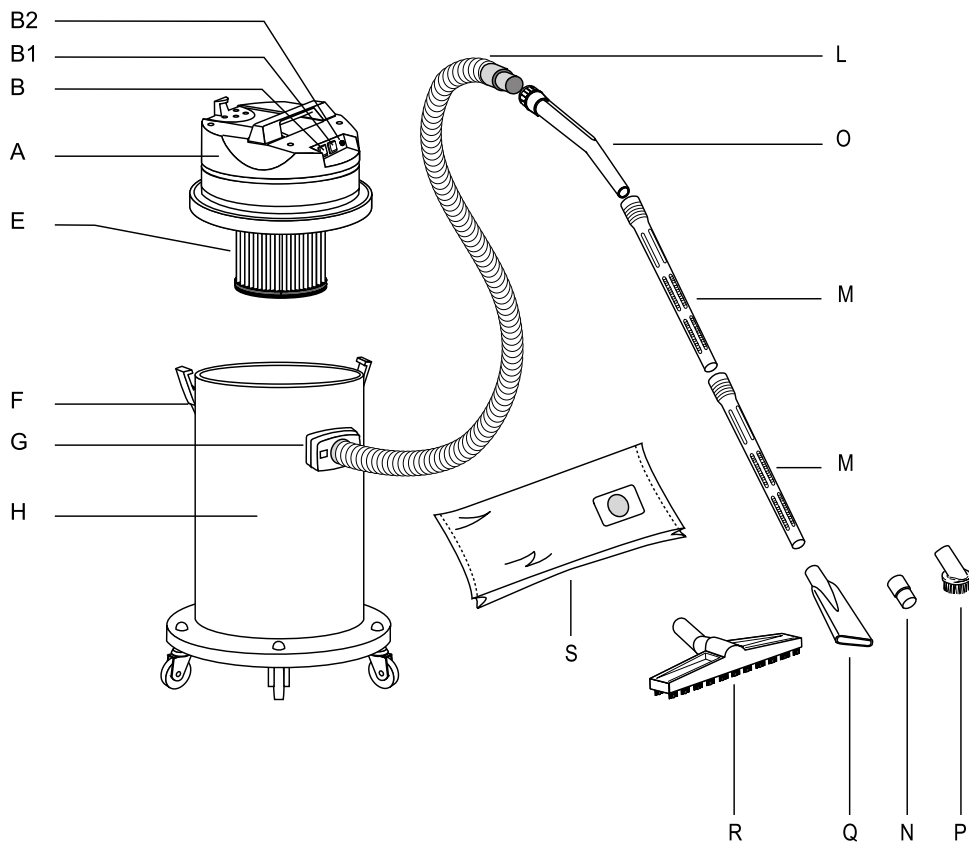
SEE THE WARNING LABEL ON THE TANK OF THE MACHINE



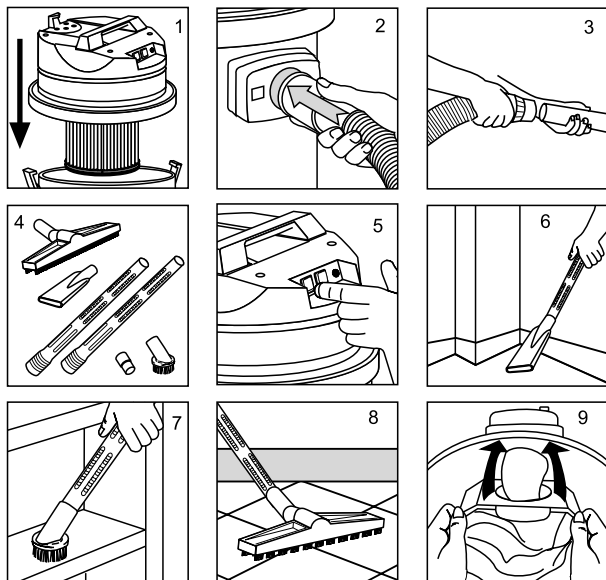
M: (MEDIUM HAZARD) suitable for separating dust with a limit value of occupational exposure greater than 0,1 mg/m³

NOTE: The ref. code of the filter approved for this machine for the category indicated is as follows (to be mentioned in case of order of spare part):

REF. 020221 - FILTER CARTRIDGE - Filter surface: 12000 cm²



N.B. Drawings above are merely indicative.



- A - Vacuum head.
- B - Switch.
- B1 - Switch only for PULSAR 429-M / JUNIOR PULSAR 429-M 2 motors
- B2 - Bag full Pilot light
- E - Filter cartridge
- F - Hooks for tightening of vacuum head to tank.
- G - Suction inlet.
- H - Tank.
- L - Flexible hose.
- M - Tube.
- N - Adaptor.
- O - Wand.
- P - Round brush.
- Q - Crevice tool
- R - Dust tool.
- S - Paper/cloth bag (OPTIONAL)

IMPORTANT SAFETY INSTRUCTIONS:

- This appliance is not to be used by people (children included) with reduced physical, sensorial or mental capacities or without any experience and knowledge, unless they did not receive instructions relative to the use of the appliance and are controlled by a person responsible for their safety.
- Children should be controlled so that they don't play with the appliance.
- The packaging components could constitute potential dangers (e.g. plastic bags): they must be kept away from children and from other people or animal not conscious of their actions.
- Any different use from that indicated in this manual could constitute a danger, therefore, it must be avoided.
- **ATTENTION:** this machine is for dry pickup only, and it cannot be stored outdoor or in damp conditions.
- **ATTENTION:** Don't point the suction opening towards delicate parts of the body – of people or animals - such as eyes, ears, mouth, etc.
- **ATTENTION:** if the appliance is fitted with a supplementary plug, do not exceed the power reported on the plug. Non-compliance with this could cause fires and damages even lethal to the user.
- **ATTENTION:** the appliance is not suitable for areas protected against electrostatic discharges.
- **ATTENTION:** use only the brushes supplied with the appliance or those specified in the instruction manual. Using other brushes could jeopardize safety.
- **ATTENTION:** Do not leave the functioning appliance unattended, always remove the plug from the socket when not using the appliance and store it away from the reach of children or people who are not conscious of their actions.
- **ATTENTION:** This appliance is not suitable for recollection of dangerous dust. Do not vacuum toxic, explosive, flammable or incandescent substances. The maximum temperature allowed is (40°C / 104°F) (120°C / 478°F).
- Every part of the appliance must be correctly assembled

- Assemble the head on tank and lock it by hooks (Fig. 1)
- Connect the flexible hose into the inlet (Fig. 2).
- Connect the wand and the extensions to other side of flexible hose (Fig. 3).
- Select the most suitable accessory (Fig. 4).
- Connect the plug to power socket then switch on the equipment (Fig. 5).
- Example of use of crevice tool (Fig. 6).
- Example of use of round brush (Fig. 7).
- Example of use of brush on the floor (Fig. 8).
- If a paper/cloth bag is provided, insert it in the tank on the deflector (Fig. 9).

before using it. Verify, furthermore, that the filter elements have been correctly and efficiently assembled.

- Ascertain that the values indicated on the nameplate correspond to those of the network to which you intend to connect the appliance and that the socket is compatible with the plug.
- Do not pick up materials that could damage the filter elements (such as glass, metal etc.).
- Do not ever pull or lift the appliance by the electrical cable.
- Do not immerge the appliance into water and neither use water jets to clean it.
- Always remove the plug from the socket before performing any operation.
- Regularly check the mains cable looking for damages, cracks or ageing. Substitute the cable before using it further.
- The substitution of the damaged cable must be done by the tech assistance service or by competent authorized personnel with recognized qualification.
- When using electrical extensions, make sure that these are compatible with the power cable and that it does not touch liquids or conductive surfaces.
- Specialized personnel must always carry out maintenance and repairs; any damaged part must be substituted with original spare parts.
- **ATTENTION:** it is forbidden to carry out changes to the appliance. Tampering could cause fires and damages even lethal to the user and the forfeiture of the guarantee.
- The manufacturer declines any responsibility for damages caused to people or things due to non-compliance with these instructions or if the appliance is unreasonably used.

PERFORMANCE - PULSAR 515 M / ISSA PULSAR 515M:
1200 W max - 22560 hPa - 200 m³/h
PULSAR 429 M / JUNIOR PULSAR 429 M:
2800 W max - 22560 hPa - 400 m³/h



This symbol will be used to remind the operator to pay attention to operations that can cause injuries, even death, to the operator or to people or animals present in the surroundings.

Moreover the operations identified by this symbol could cause even irreparable damages to the vacuum cleaner.

INTRODUCTION

It's important that the vacuum cleaner be used by responsible persons who keep a proper use of functioning, maintenance and repairing. In case of problems of functioning always ask your dealer.

The aim of this handbook of instructions is to inform the operator of the main functions of the vacuum cleaner so as to work always in safe conditions.

It is the buyer's responsibility to ensure that the vacuum cleaner is used by people informed about this handbook of instructions.

The buyer is not allowed to modify or tamper with the vacuum cleaner in any way, under pain of warranty voidance and the exemption of the manufacturing company from liability about eventual damages to things or people.

In case of loss or damage of the handbook, please contact the manufacturing company.

In case of sale of the vacuum cleaner please deliver this handbook of instructions to the future owner or inform the buyer about the manufacturing company data.



GENERAL REGULATIONS

- Read the manual before starting up the vacuum cleaner.
- Check that the staff authorized to operate the vacuum cleaner have read this instruction manual.

WARNING:

- Before use the operators should be informed, instructed and trained to use the device and the substances for which it must be used, including the safe method of removal and elimination of the collected material.
- For maintenance by the user, the device must be dismantled, cleaned, and serviced, as much as is reasonably applicable, without causing risks to maintenance staff and to others.
Suitable precautions include decontamination before dismantling, conditions for forced exhaust air ventilation in the room where the device is dismantled, cleaning of the maintenance area and suitable protection for the staff.
- The user or any trained person must carry out a technical check – at least once a year – which consists, for example, in checking the filters, checking for damages to the air-tightness of the device and the correct functioning of the control mechanism.
- It is necessary to supply a proper exchange of air in the room if the exhaust air of the device returns into the room. Reference to national regulations is necessary.
- All the parts of the device must be deemed to be contaminated when they are removed from the danger area and appropriate action must be taken to prevent dispersal of dust.
When maintenance or repair operations are carried out, all contaminated elements which cannot be cleaned well must be eliminated.
These elements must be eliminated in impenetrable bags conforming to the regulations applicable for the elimination of such materials.
- Check that the vacuum cleaner has not suffered any bumps or damages.
- Check that all the safety measures are present and efficient.

NOISE LEVEL

Values measured according to EN 60704 - 1 (1997) / EN 60704 -2 - 1 (2001) rules.

Measurement A for the sound pressure level of the machine is < 81 dB (A)

Under unfavourable feed conditions, the appliance may cause temporary drops in voltage.



Do not dispose of power tools into household waste!

According to the European Directive 2012/19/UE on waste electrical and electronic equipment and its incorporation into national law, power tools that are no longer suitable for use must be separately collected and sent for recovery in an environmental-friendly manner.

INSTRUCTIONS FOR THE USE OF VACUUM CLEANERS FITTED UP WITH AUTOMATIC START/STOP SYSTEM. (ELECTRO-PNEUMATIC CONTROL DEVICE)

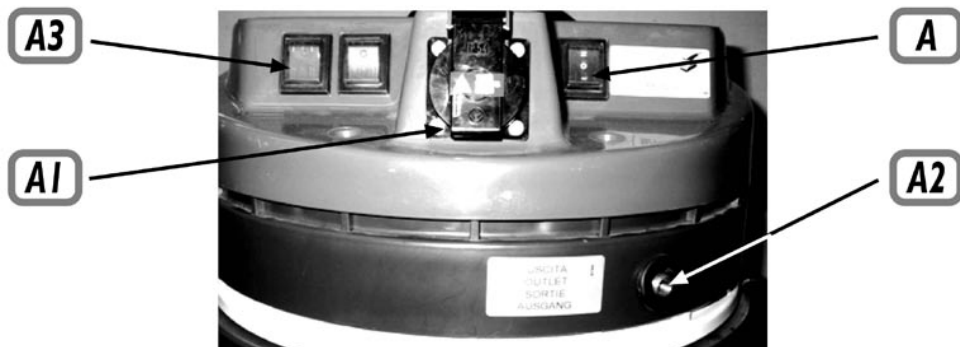


ATTENTION: These instructions should be considered as supplementary parts of the “General Rules” described in your handbook of instructions.



ATTENTION: The manufacturer cannot be held responsible at all for any damage to people or things caused by the improper or negligent use of the ELECTRO-PNEUMATIC CONTROL SYSTEM.

In order to ensure safe operations and prior to using this function, the operator must be full acquainted with the relevant instructions for the use of this tool. Reported instructions must be strictly adhered to.



Note: The picture of the appliance showing the electro-pneumatic control device is only given as an indication, as this function is the same for the different models.



ATTENTION: When electric tools are used, never exceed the power reported on the additional plug of the vacuum cleaner. Be sure that the voltage of the electric tool is the same as that reported on the plate of technical data (see picture for an example). Failure to adhere to these rules may cause fires and damages, even death, to the operator. The vacuum cleaner has to be connected to a grounded cable.

The electro-pneumatic control function may be activated by putting the switch (A) of the appliance in to the position II. At this point the vacuum cleaner will automatically start and stop according to the starting or stopping of the electric tool. When the switch is in the position I the vacuum cleaner works manually.



ATTENTION: prior to putting the switch of the vacuum cleaner in the position “II” be sure that the tool is off.

For the connection of tools there are two different systems that may be used simultaneously or alternately:

[A1]: Plug for electric tools (this is not present in the pneumatic controls)

[A2]: Feeding outlet for pneumatic tools (this is not present in the electric controls)

[A3]: Switches to start alternately the 2nd and the 3rd motor if they are present

When pneumatic tools are used never exceed the rated pressure of 150 PSI (10,20 atm) – Burst danger of the feeding outlet.

Start: When the operator starts the tool the vacuum cleaner will automatically start.

Stop: When the operator stops the tool the vacuum cleaner will automatically stop with a delay of about 7 seconds.

At the end of the work, the tool must be disconnected from the vacuum cleaner.



WARNING: THE SUPPLEMENTARY SOCKET IS ALWAYS LIVE WHEN THE PLUG ON THE ASPIRATOR IS POWER.

WARRANTY CONDITIONS

Quirepace Ltd, guarantees the parts of the appliance that prove to be faulty for 12 months. If within the warranty period any defect appears in the goods, Quirepace undertakes to remedy such defect either by repairing the Goods or by replacing them, whichever Quirepace shall choose,

PROVIDING that –

- a) Full details of such defect are notified to Quirepace in writing within 10 days if it first appearing; and
- b) The buyer affords Quirepace access at any time during normal business hours for repairing or replacing the defective goods; and
- c) The buyer affords Quirepace free access at any time during the warranty period and during normal business hours to inspect the goods.

BUT this warranty SHALL NOT APPLY to following:

- Defects arising from fair wear and tear, misuse, neglect or failure to carry out maintenance procedures or fitting instructions recommended by Quirepace.
- Defects in the goods resulting from modifications to the goods or to related equipment by someone other than Quirepace.
- Defects in the Goods where the identification numbers or marks on such goods or on equipment in relation to which the goods are used have been altered or removed.
- Defects resulting from use of any part or attachment or equipment fitted by someone other than Quirepace.
- Traction batteries, in which case, manufacturers guarantees apply.
- The above warranty does not apply to hoses, brushes and accessories which are classed as consumable items.

For spares and accessories please contact:

Quirepace Ltd
Quirepace House
6 Pennant Park
Fareham, Hampshire
PO16 8XU UK

Tel: +44 (0) 23 9260 3700
Fax: +44 (0) 23 9250 4648
admin@quirepace.co.uk
www.quirepace.co.uk

EC DECLARATION OF CONFORMITY
CE DICHIARAZIONE DI CONFORMITA'
2006/42/CE - 2014/30/UE - 2011/65/CE

We/noi:

IP Cleaning S.r.l.
via E.Fermi,2
26022 Castelveverde (Cremona) - ITALY

declare under our responsibility that the product
dichiariamo sotto la nostra responsabilità che il prodotto

to which this declaration relates is in conformity with the following standards or other normative document(s):
al quale questa dichiarazione si riferisce, è conforme alle seguenti norme:

- IEC 60335 -1:2010+A1:2013
- IEC 60335 - 2 - 69:2012
- IEC 62233: 2008
- EN 55014 - 1:2006+A1:2009+A2:2011
- EN 55014 - 2:1997+A1:2001+A2:2008
- EN 61000 - 3 - 2: 2014
- EN 61000 - 3 - 3: 2013

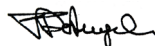
Following the provisions of the Directives: 2006/42/EC (Machinery directive)
2014/30/EU (Electromagnetic compability EMC) - 2011/65/EC (Directive RoHS II)
in base a quanto previsto dalle Direttive: 2006/42/CE (Direttiva macchine)
2014/30/UE (Compatibilità elettromagnetica EMC) - 2011/65/CE (Direttiva RoHS II)

Person authorised to compile the technical file
Persona autorizzata a compilare il fascicolo tecnico
IP Cleaning S.r.l.

Via E.Fermi, 2 26022 Castelveverde (Cremona) - ITALY

Castelveverde 01/06/2018

Legal Representative
Rappresentante legale
Federico De Angelis



PLDC04118-00



**Integrated
Professional
Cleaning**

IP Cleaning S.r.l.
Sede Legale/Amministrativa - Registered Office/Administration
V.le Treviso, 63 - 30026 Summaga di Portogruaro (Venice) Italy
Tel. +39 0421 205511 Fax +39 0421 204227
Sede produttiva - Production premises
Via E.Fermi,2 – 26022 Castelveverde (Cremona) Italy
Tel. +39 0372 424611
Fax Export: +39 0372.429398 Italia: +39.0372.429392
Internet address: <http://www.ipcwordwide.com>